



# YOUTH SERVICES DIRECTORY

WESTERN AUSTRALIA  
2019



**The Youth Friendly Doctor (YFD) training program is designed to enhance the knowledge and skills of doctors to effectively engage with adolescents.**

For more information and to enrol in the Youth Friendly Doctor program please visit [amawa.com.au](http://amawa.com.au) to complete the registration form, or contact the AMA (WA) on **(08) 9273 3000** or [yfd@amawa.com.au](mailto:yfd@amawa.com.au).



# **YOUTH SERVICES DIRECTORY WESTERN AUSTRALIA 2019**

**For up to date information please visit  
[amawa.com.au](http://amawa.com.au)**

Although every effort has been made to present reliable and accurate information, the AMA will assume no responsibility for outcomes and actions resulting from the application of the information presented in this directory. Users are encouraged to confirm the services provided with the appropriate organisation.

This book is the copyright of AMA (WA) Foundation and is intended for use by doctors as a referral and support resource.



**AMA (WA) Foundation**  
12-14 Stirling Highway, Nedlands WA 6009  
**p.** (08) 9273 3000  
**f.** (08) 9273 3073  
**e.** [foundation@amawa.com.au](mailto:foundation@amawa.com.au)  
**w.** [amawa.com.au](http://amawa.com.au)



# Foreword



**Associate Professor  
Rosanna Capolingua**  
Medical Director  
AMA (WA) Foundation

This Youth Services Directory has been designed and produced especially to assist Youth Friendly Doctors who have been trained by the Australian Medical Association in Western Australia to understand the range of issues facing adolescents.

Of particular focus in this Directory are youth services that relate to mental health, sexual health, alcohol and other drugs. These are the key areas covered in harm minimisation sessions delivered each year by Dr YES medical student volunteers to high school students across the state and are important components of the Youth Friendly Doctor Training Program.

Adolescence can be a difficult time for our youth as they find themselves confronted by a variety of life changes and challenges. Every generation seems to encounter a slightly different world as technology, social media and those wishing to tap into the market of youth fill their environment and influence the choices young people make. The path to make the best choices for themselves can often be difficult. The AMA (WA) understands these issues and is committed to improving awareness among medical professionals of the variety of services available to help youth through these challenging times.

Initially produced in 2010 and again in 2014, this 2019 printed version of the Directory will enable our Western Australian trained Youth Friendly Doctors to quickly identify where youth services are located throughout Western Australia and will continue to be a valuable resource in helping them assist adolescent patients. An online version that is regularly updated will also be available on the AMA (WA) and Dr YES websites.

The AMA (WA) aims to use its resources, knowledge and expertise to continue to help the medical profession, and the community, to focus on the wellbeing of our youth.

# Contents

## Alcohol & Drugs

Al-Anon and Alateen Family Groups WA	14
Alcohol and Drug Information Service (ADIS)	14
Bridge Program (Salvation Army WA)	23
Clinical Advisory Service	29
Community Drug Service Teams (CDST)	30
Cyrenian House - Drug Treatment and Rehabilitation Centre	34
Drug and Alcohol Youth Service (DAYS)	36
Hope Community Services	47
Local Drug Action Groups (LDAG)	54
Noongar Alcohol and Substance Abuse Services (NASAS)	59
Palmerston Centre and Farm	61
Parent Drug Information Service (PDIS)	62
Peer Based Harm Reduction WA	65
Poisons Information Centre	66
Quit Now	68
St John of God - Social Outreach and Advocacy Service	77
Substance	79
WA Network of Alcohol and Other Drug Agencies (Wanada)	86

## Disability

Activ	12
Amity Health	15

Citizen Advocacy Perth West Inc.	27
Inclusion WA	48
Intelife	49
Uniting Care West	82
Visability	82

## Government & Legal

Compassionate Friends	32
Department for Child Protection	35
Department of Health (DOH)	35
Department of Sport and Recreation - Youth	35
Legal Aid (Youth Law Team)	53
WA Community Legal Centres (WACLC)	83
Women's Law Centre of WA	85
Youth Legal Services	95

## Homelessness & Accommodation

Accord West	12
Adoption Jigsaw (WA) Inc.	13
Anawim Refuge	16
Anglicare WA	16
The Beacon - The Salvation Army	22
Centre for Safety and Wellbeing	26

# Contents

City of Canning Youth and Family Services	28	Freo Street Doctor – Black Swan Health	41
Community for the Restoration of Family Trust Inc. (CROFT)	32	Healthdirect	44
Crossroads Youth Accommodation	33	Joondalup Health Campus	51
Crossroads West – Transitional Support Service (TSS)	34	King Edward Memorial Hospital for Women (KEMH)	2
Devenish Lodge	36	Marie Stopes International	55
Fusion Student Household	41	Peel Youth Medical Service (PYMS)	65
GP Down South	42	Perth Children’s Hospital	66
GP4YP	42	Richmond Wellbeing	70
Indigo Junction	48	Royal Perth Hospital	71
Salvation Army – Crossroads West Youth Accommodation Service	72	St John Of God – Midland Public Hospital	77
Shenton Child and Adolescent Centre	74	Street Doctor	78
Tinoca Crisis Hostel	80	Youth Friendly Doctor	94
Women’s Refuges	88		
Youth Place	96		

## Hospitals & Medical Service

Association for the Welfare of Children in Hospital	20	Aboriginal Health Council of WA (AHCWA)	8
Asthma Foundation of WA	21	Aboriginal Hostels	8
Black Swan	22	Aboriginal Legal Service of WA Inc. (ALSWA)	8
Centrecare	24	Aboriginal Medical and Health Services (AMHS)	9
Communicare	29	Eastern Goldfields Sexual Assault Resource Centre (EGSARC)	38
Crisis Care	33	Edventures WA	38
Fiona Stanley Hospital	40	Jungarni - Jutiya (Indigenous Corporation)	51
Fremantle Hospital	40	Karratha Youth Housing Project	52
		Wungening Aboriginal Corporation	90
		Yaandina Family Centre and Youth Services	91

## Indigenous

# Contents

Yirra Yaakin Noongar Yorgum Aboriginal Corporation	91	Youth Focus	93
Yorgum Aboriginal Corporation	91	Youthlink	95
Youth Involvement Council (YIC)	94	Youth Reach South	95

## Mental Health

Active Response Bereavement Outreach	12	Aidslife (WAAIDS Council)	13
Child and Adolescent Mental Health Service	26	Allambee Counselling	15
Children of Parents with a Mental Illness	27	Freedom Centre	40
Consumers of Mental Health (COMHWA)	33	Gender Diversity Assessment and Consultation Clinical Psychologist Service	42
Headspace	43	Hepatitis WA	45
Helping Minds	45	Incest Survivors Association	48
Kimberley Mental Health Portal	52	Living Proud	53
Lifeline WA	53	Pregnancy Assistance	67
Lorikeet Centre	54	Pregnancy Problem House	67
Mental Health Commission	56	Sexual Assault Resource Centre (SARC)	72
Mental Health Emergency Response Line (MERL)	56	Sexual Health Helpline	73
Mh Connex	57	Sexual Health Quarters (SHQ)	73
Mh Portal – 360 Health + Communit	57	Share and Care	74
North Metropolitan Health Service - Mental Health	59	WA Aids Council (WAAC)	83
Pilbara Mental Health and Drug Service	64	WA Police – Child Assessment and Interview Team	86
Ports	67	Waratah Support Centre	87
Subiaco Community Mental Health – Avro House	79	Women’s Health Services	87
WA Association for Mental Health	83	Women’s Information Service (WIS)	88
Warwick Child and Adolescent Centre	87	Youth Engagement Program (YEP)	93
Youth Beyond Blue	92		

## Sexual Health

# Contents

## Youth, Education & Support

Adoption Research and Counselling Services (ARCS) Inc.	13	Fresh Start Recovery Programme	41
Albany Youth Support Association (AYSA)	14	Heart Foundation	45
Altone Youth Services	15	Holyoake	46
Armadale, Gosnells and District Youth Resources	20	Make-A-Wish Australia	55
Association for Services to Torture and Trauma Survivors Inc. (ASETTS)	20	Mensline Australia - Young Men	55
Balga Detached Youth Work Project	22	Minnawarra House - Roberta Jull Youth and Family Counselling Service	56
Burdekin - Youth in Action Inc.	23	Mission Australia - Youth Accommodation Support Service (YASS)	57
Canteen		Ngala	59
Carers WA - Young Centre for Safety and Wellbeing	24	Onslow Youth Service	60
City of Belmont Youth and Family Services	27	Open Doors Youth and Family Counselling Service	60
City of Busselton	28	Ors Cabis (Child and Adolescent Brief Intervention Service)	60
City of Rockingham Youth Health Service	28	Parents and Friends of Lesbians and Gays (PFLAG)	62
City of Vincent	29	Parkerville Children and Youth Care Inc.	63
Cockburn Youth Services	29	Passages Resource Centre	64
Connect Groups	32	Peel Youth Services Inc	65
Create Foundation	33	Perth Inner City Youth Service (PICYS)	66
Domestic Violence Children's Counselling Services (DVCCS)	36	Phoenix Advocacy and Support Service	66
Dungeon Youth Centre	37	Relationships Australia	69
Family Court Counselling Service	39	Rise Community Support Network	71
Family Helpline	39	Roebourne PCYC	71
Family Relationships	39	Samaritans Youth Office	72
Family Therapy Consultancy	39	Shire of East Pilbara (YACWA)	75
		Shire of Manjimup	75
		Shire of Mundaring - Parent and Adolescent Counselling Services	76
		South West 24	76

# Contents

Sports Challenge Australia	77
St Vincent De Paul Society	78
Street Connect Program	78
Swan City Youth Service	79
Teen Challenge	80
Tom Price Youth Centre	80
Translating And Interpreting Service (TIS)	81
Young Men's Christian Association (YMCA)	92
Youth Affairs Council Of Wa Inc. (YACWA)	92
Youth Care Chaplaincy	93
Youth Futures WA	95
Youth Say No	96

## ABORIGINAL HEALTH COUNCIL OF WA (AHCWA)

AHCWA's mission is to support the Indigenous peoples of Western Australia to reach the same levels of life expectancy and access to health services as the rest of the Australian population through Aboriginal Community Controlled Health Services, AHCWA's members.

450 Beaufort Street, HIGHGATE WA 6003

**P** 9227 1631

**F** 9228 1099

**E** reception@ahcwa.org

Mon - Fri 8.30am - 5.30pm

**ahcwa.org**

## ABORIGINAL HOSTELS

Operates a number of hostels catering to individuals of Aboriginal descent.

Unit 2, 47 Cedric Street, STIRLING WA 6021

**P** 9349 2548

**F** 9349 3864

**E** region1@ahl.gov.au

Mon - Fri 8.30am - 4.30pm

**ahl.gov.au**

## ABORIGINAL LEGAL SERVICE OF WA INC. (ALSWA)

Free legal assistance, representation for civil, criminal and family law for Aboriginal and Torres Strait Islander peoples living in WA. ALSWA has a head office in Perth and offices in 16 country locations.

### METRO

Perth Head Office, 7 Aberdeen Street, EAST PERTH WA 6004

**P** 9265 6666 or 9265 6644 (after hours)

**Toll free** 1800 019 900

**F** 9221 1767

Mon - Fri 8.30am - 5.00pm

**als.org.au**

### REGIONAL

	Phone	Toll free	Fax
<b>Albany</b>	9841 7833	1800 016 715	
<b>Broome</b>	9192 1189	1800 351 067	
<b>Bunbury</b>	9791 2622	1800 630 375	
<b>Carnarvon</b>	9941 1534	1800 645 942	
<b>Fitzroy Crossing</b>	9191 5147		
<b>Geraldton</b>	9921 4938	1800 016 786	
<b>Halls Creek</b>	9168 1635		
<b>Kalgoorlie</b>	9021 3666	1800 016 791	9021 6778
<b>Kununurra</b>	9168 1635		
<b>Meekatharra</b>	9981 1712		
<b>Northam</b>	9622 5933	1800 442 015	9622 5006
<b>South Hedland</b>	9172 1455	1800 650 162	
<b>Newman</b>	9175 0764		9175 0763

## ABORIGINAL MEDICAL AND HEALTH SERVICES (AMHS)

The network exists to deliver holistic and culturally appropriate health care and health related services to the Aboriginal community. The medical and health services have various locations around Western Australia.

### METRO

#### Derbarl Yerrigan Health Services Inc.

Provides support to people of Aboriginal descent. Services include GP clinics, dental clinics, podiatry and heart health, maternal and child health, ear and eye health and many more.

156 Wittenoom Street, EAST PERTH WA 6004

**P** 9421 3888

**F** 9421 3884

**E** admin@dyhs.org.au

Mon - Fri 8.30am - 7.00pm

**dyhs.org.au**

#### Elizabeth Hansen Autumn Centre

Provides hostel accommodation for the indigenous aged 18+ with renal failure.

340 Guildford Road, BAYSWATER WA 6053

**P** 9370 1044

**F** 9370 5930



# A

## Maddington

Unit 1-3, Lot 5 Binley Place, MADDINGTON WA 6109

**P** 9452 5333

**F** 9452 5344

Mon – Fri 8.30am – 5.00pm

## Mirraboooka

22 Chesterfield Road, MIRRABOOKA WA 6061

**P** 9344 0444

**F** 9344 0499

Mon – Fri 8.30am – 5.00pm

## REGIONAL

### Bega Garbarringu Health Service

16-18 McDonald Street, KALGOORLIE WA 6430

**P** 9022 5500

**F** 9091 1302

Mon – Fri 8.30am – 4.30pm, Thurs 8.30am – 2.30pm

**begs.org.au**

### Broome Regional Aboriginal Medical Services

Lot 640 Corner Anne and Dora Streets, BROOME WA 6725

**P** 9192 1338

**F** 9192 1606

**E** reception@brams.com.au

Mon – Fri 8.00am – 4.30pm

### Carnarvon Aboriginal Medical Service

14-16 Rushton Street, CARNARVON WA 6701

**P** 9941 2499

**F** 9941 2024

Mon – Fri 8.30am – 5.00pm

**cmsac.com.au**

### Derby Aboriginal Health Service

1 Stanley Street, DERBY WA 6728

**P** 9193 1090

**F** 9193 1903

**E** info@dahs.org.au

Mon – Fri 8.30am – 4.00pm

**derbyaboriginalhealthservice.org.au**

# A

## Geraldton Regional Aboriginal Medical Service

60 Rifle Range Road, GERALDTON WA 6530

**P** 9956 6555

**F** 9964 3225

Mon, Wed 8.30am – 8.30pm, Tues, Thurs, Fri 8.30am – 4.30pm, Sat 9.00am – 1.00pm

**grams.asn.au**

## Mawarnkarra Aboriginal Health Service

20 Sholl Street, ROEBOURNE WA 6718

**P** 9182 0851

**F** 9182 1055

Mon 8.30am – 3.00pm, Tues – Fri 8.30am – 4.45pm

## Ngangganawili Aboriginal Health Service

Doctor and nurse available on call during weekends.

44, Scotia St, WILUNA

**P** 9981 8600

**F** 9981 7029

**E** reception@nahs.org.au

Mon – Fri 8.00am – 4.30pm

**nahs.org.au**

## Ord Valley Aboriginal Health Service

1125 Ironwood Street, KUNUNURRA WA

**P** 9168 1288

**F** 9168 2053

**E** admin@ovahs.org.au

Mon, Tue, Thurs 8.15am – 4.00pm, Wed 9.00am – 4.00pm, Fri 8.15am – 3.00pm

## Puntukurnu Aboriginal Medical Service

15 Iron One Parade, Newman House, NEWMAN WA 6753

**P** 9177 8307

**E** pams@puntukurnu.com

## South West Aboriginal Medical Service

55 Forest Avenue, BUNBURY WA 6230

**P** 9726 6000

**F** 9791 7655

**Toll free** 1800 779 000

**E** reception@swams.com.au

Mon – Fri 9.00am – 5.00pm

**swams.com.au**

**Wirraka Maya Aboriginal Health Service**

17 Hamilton Street, SOUTH HEDLAND WA 6722

**P** 9140 2922**F** 9140 2966

Mon – Thurs 8.30am – 5.00pm, Fri 8.30am – 4.30pm

**Yura Yungi Aboriginal Medical Service**

10 Teron Street, HALLS CREEK WA 6770

**P** 9168 6266**F** 9168 6028**E** [kamsc@kamsc.org.au](mailto:kamsc@kamsc.org.au)

Mon – Fri 8.00am – 4.30pm

**ACCORD WEST**Provides supports and **24 hour crisis accommodation** for young people aged 16 to 24 years of age.

26-28 Forest Avenue, BUNBURY WA 6230

**P** 9729 9000**Toll free** 1800 115 799**E** [info@accordwest.com.au](mailto:info@accordwest.com.au)

Mon – Fri 9.00am – 5.00pm (office)

**ACTIV**

ACTIV provides a range of services to people with intellectual disability, their families and carers. Accommodation, employment and respite options are available throughout metropolitan and regional WA.

327 Cambridge Street, WEMBLEY WA 6014

**P** 9387 0555**F** 9387 0599**E** [records@activ.asn.au](mailto:records@activ.asn.au)

Mon – Fri 8.00am – 5.00pm

**activ.asn.au****ACTIVE RESPONSE BEREAVEMENT OUTREACH**

Outreach service for people bereaved by suicide (not a crisis service).

**P** 1300 11 44 46**E** [arbor@anglicarewa.org.au](mailto:arbor@anglicarewa.org.au)

Mon – Fri 9.00am – 4.30pm

**anglicarewa.org.au****ADOPTION JIGSAW (WA) INC.**

Information, search assistance, counselling and support for those affected by adoption and/or separated from family.

176. Fitzgerald Street, PERTH WA 6000

**P** 9328 4000**F** 9384 7192**E** [jigsaw@jigsaw.org.au](mailto:jigsaw@jigsaw.org.au)**jigsaw.org.au**

Mon – Thurs 8.00am – 4.00pm, Fri 8.00am – 12.00pm

**ADOPTION RESEARCH AND COUNSELLING SERVICES (ARCS) INC.**

Information, counselling and support for those affected by adoption, separation from family infertility, parenting, step and blended families and foster care.

301 Railway Parade, MAYLANDS WA 6051

**P** 9370 4914**F** 9370 4917**E** [contact@adoptionwa.org.au](mailto:contact@adoptionwa.org.au)

Tues – Fri 9.00am – 4.30pm or by appointment

**adoptionwa.org.au****AIDSLINE (WAAIDS COUNCIL)**

AIDSline is a confidential and anonymous telephone service provided by the WA AIDS Council to the community. The service provides information, education and referral on a range of issues, including: HIV/AIDS, hepatitis, sexually transmissible infections (STIs), STI and BBV (blood borne virus) testing, safer sex information, safer sex equipment and information about sexuality. AIDSline does not offer medical advice or provide counselling. The service is staffed by trained volunteers.

**P** 9482 0000**E** [waac@waacids.com](mailto:waac@waacids.com)

Mon – Fri 9.00am – 5.00pm

**waacids.com**



## AL-ANON AND ALATEEN FAMILY GROUPS WA

Services for youth with alcoholic friends and/or family. Please call for meeting times.

Room 9, Claisebrook Lotteries House, 33 Moore Street, EAST PERTH WA 6004

**P** 9325 7528

**Help line** 1300 252 666

**E** office.admin@alanonwa.org

Mon – Fri 10.30am – 2.30pm (office)

**al-anon.org.au**

## ALBANY YOUTH SUPPORT ASSOCIATION (AYSA)

Provides crisis accommodation and other support services for young people aged 12 to 25 years.

AYSA operates four programs, including: Young House, SHOT, Albany Youth Outreach and Reconnect.

Young House, 12 Young Street, ALBANY WA 6330

**P** 9842 2082

**E** admin@aysa.org.au

24 hours, 7 days

**aysa.org.au**

## ALCOHOL AND DRUG INFORMATION SERVICE (ADIS)

ADIS provides a confidential telephone counselling, information and referral service to people who are affected by their own or someone else's alcohol and other drug use. The service offers telephone support for GP referred alcohol pharmacotherapy clients and is a frontline service for health and welfare workers. ADIS also provides counselling for the Parent Drug Information Service and the QUIT LINE.

**P** 9442 5000 or 1800 198 024 (toll free – country callers)

**F** 9442 5020

**E** adis@health.wa.gov.au

Infoline open 24 hours

**mhc.wa.gov.au/about-us/our-services/alcohol-and-drug-support-service/alcohol-and-drug-support-line/**

### Clinical Advisory Services

GP support for alcohol and other drug issues.

**P** 9442 5042 or 1800 622 847 (toll free)

**E** nextstep.cas@health.wa.gov.au

## ALLAMBEE COUNSELLING

Provides counselling to survivors of sexual assault and domestic violence. Service includes children and young persons' sexual assault and sexual abuse counselling service.

Lotteries House, Suite 16/7 Anzac Place, MANDURAH WA 6210

**P** 9535 8263

**F** 9535 3869

**E** help@allambee.org.au

Mon – Fri 8.30am – 4.30pm

**allambee.org.au**

## ALTONE YOUTH SERVICES

Counselling, referral, recreation alternatives, life skills, training and drop in centre for people aged 11 to 25 years and considered at risk.

332 Benara Road, BEECHBORO WA 6063

**P** 9377 4022

**F** 9377 4033

**E** ays@iinet.net.au

Mon – Fri 9.00pm – 5.00pm

**standbymewa.org.au**

## AMITY HEALTH

Amity Health is a not for profit organisation celebrating over 20 years of service in country WA. Amity Health employs a team of Allied Health professionals to provide health and wellbeing solutions using a partnership approach and provides early intervention and prevention strategies for mental health and physical health, and chronic disease management.

36 Lockyer Avenue, ALBANY 6330

**P** 9842 2797

**F** 9842 2798

**E** query@amityhealth.com.au

## ANAWIM REFUGE

Refuge accommodation for Aboriginal women 18 years and older without children.

**P** 9328 7562 (10am – 1pm) or 13 78 24 (24 hours)

**F** 9228 4674

**E** connecting@ruah.org.au

**ruah.org.au**

## ANGLICARE WA

A variety of youth services addressing the needs of at risk and homeless young people, including employment, training and counselling. There are a number of locations around Western Australia.

Head Office, 23 Adelaide Terrace, EAST PERTH WA 6004

**P** 9263 2000

**F** 9325 8969

**E** info@anglicarewa.org.au

**Facebook** /ANGLICAREWA

Mon – Fri 8.00am – 4.00pm

**anglicarewa.org.au**

### ANGLICARE ACCOMMODATION SERVICES

Supported accommodation for young people aged 15 to 20 years who are homeless or at risk of becoming homeless, maximum stay of three months. The service is staffed on a 24 hour rotating roster. Young people are required to complete a telephone intake assessment; a decision will then be made as to whether the service is available.

#### Rockingham

62 Fifty Road, BALDIVIS WA 6167

**P** 9523 3400

**F** 9524 1832

**E** yshac.rockingham@anglicare.org.au

24 hours

#### Y-Shac Spearwood

6/246 Spearwood Avenue, SPEARWOOD WA 6163

**P** 9412 0673

**F** 9494 2744

**E** yshac.spearwood@anglicarewa.org.au

4 hours, 7 days

## ANGLICARE SERVICES

Counselling in relationships, lifestyle changes for individuals, couples and families. Also located at Broome, Gosnells, Joondalup, Albany, Dampier, Kununurra and East Perth.

23 Adelaide Terrace, EAST PERTH WA 6004

**P** 9263 2050 or 1800 812 511 (phone counselling)

**F** 9325 8969

**E** info@anglicarewa.org.au

Mon – Thurs 9.00am – 9.00pm, Fri 8.30am – 4.30pm

### METRO

#### Armadale - Financial Services

108 Jull Street, ARMADALE WA 6112

**P** 9399 1089

**E** financialcounselling.armadale@anglicarewa.org.au

#### Balga - Community Development, Emergency Relief, Men's Time

30 Balga Avenue, BALGA WA 6061

**P** 9247 9727

#### Byford - Financial Services

Corner Mary and Clifton Street, BYFORD WA 6122

**P** 9525 4180

#### Fremantle - Emergency Relief

29 Queen Victoria Street, FREMANTLE 6160

**P** 9325 7033

#### Gosnells - Relationship Counselling, Employee Assistance, Child Sexual Abuse Service

Suite 9, 1st Floor, 2232 Albany Highway, GOSNELLS WA 6110

**P** 9394 9200

**E** gosnells@anglicarewa.org.au

#### Joondalup - Relationship Counselling, Employee Assistance

Suite 5, Level 1, Grace House, 109 Grand Boulevard, JOONDALUP WA 6027

**P** 9400 7200

**E** gracehouse.reception@anglicarewa.org.au

#### Joondalup - Family and Domestic Violence Counselling, Men's Time, Education and Skills Training

126 Grand Boulevard, JOONDALUP WA 6027

**P** 9301 8500

**E** joondalup@anglicarewa.org.au

# A

**Mandurah** – Family Relationships Counselling, Young Hearts, Employee Assistance  
11-14 Pinjarra Road, MANDURAH WA 6210  
P 9583 1400  
E [mfrc@anglicarewa.org.au](mailto:mfrc@anglicarewa.org.au)

**Rockingham** – Parent Adolescent Counselling, Supported Housing Assistance  
14 Council Avenue, ROCKINGHAM WA 6168  
P 9528 0702

**St Nicholas Community Centre** – Financial Counselling, Relationships Counselling, Young Hearts, Family and DV Counselling  
14 Council Avenue, ROCKINGHAM WA 6918  
P 9528 0717

**Port Kennedy** – Financial Counselling  
Port Kennedy Family Activity Centre, 5 – 9 Clipper Drive, PORT KENNEDY WA 6172  
P 9581 0512  
E [financialcounselling.portkennedy@anglicarewa.org.au](mailto:financialcounselling.portkennedy@anglicarewa.org.au)

## REGIONAL

**Albany** – Relationships, Financial, Family and Domestic Violence Counselling  
Aberdeen Centre, St Johns Anglicare Centre, 44 Collie Street, ALBANY WA 6330  
P 9845 6666  
E [Albany.reception1@anglicarewa.org.au](mailto:Albany.reception1@anglicarewa.org.au)  
Women's Centre, Spencer Park, ALBANY WA 6330  
P 9845 6000  
E [awc@anglicarewa.org.au](mailto:awc@anglicarewa.org.au)

**Broome Kimberley Regional Offices** – Suicide Prevention, Family Dispute Resolution, Relationships  
2 Weld Street, BROOME WA 6725  
P 9194 2400  
E [broome@anglicarewa.org.au](mailto:broome@anglicarewa.org.au)

**Bunbury** – Financial Counselling  
15 Molloy Street, BUNBURY WA 6230  
P 9792 1900

**Bunbury** – Mums and Dads Forever Program, Employee Assistance Program  
95 Hudson Road, BUNBURY WA 6230  
P 9720 9200  
E [ccsbunbury@anglicarewa.org.au](mailto:ccsbunbury@anglicarewa.org.au)

# A

**Busselton** – Financial Counselling  
St Mary's Centre, 119-121 Queen Street, BUSSELTON WA 6280  
P 9754 1858  
E [FinancialCounselling.Busselton@anglicarewa.org.au](mailto:FinancialCounselling.Busselton@anglicarewa.org.au)

**Collie** – Financial Counselling  
Corner Lefroy and Forest Streets, COLLIE WA 6225  
P 9734 6500  
E [fsc.collie@anglicarewa.org.au](mailto:fsc.collie@anglicarewa.org.au)

**Denmark** – Financial Services  
Centre for Sustainable Living, South West Highway, DENMARK WA 6728  
P 9851 2611  
E [financialcounselling.mtbarker@anglicarewa.org.au](mailto:financialcounselling.mtbarker@anglicarewa.org.au)

**Derby** – Victim Support Service and Child Witness Service  
Derby Courthouse, Loch Street, DERBY WA 6728  
P 9191 0100

**Kalgoorlie** – Aboriginal Early Years and Accommodation Support  
333 Hannan Street, KALGOORLIE WA 6433  
P 9301 8530

**Katanning** – Financial Services, Supported Housing, DV Advocacy Support  
100 Clive Street, KATANNING WA 6317  
P 9821 5270 or 1800 818 593 (toll free)

**Mandurah** – Supported Housing Assistance, Stabilising Homes  
7 Anzac Place, MANDURAH WA 6210  
P 9581 0583

**Mandurah** – Family Relationship Centre  
1A 11-15 Pinjarra Road, MANDURAH WA 6210  
P 9583 1400  
E [mfrc@anglicarewa.org.au](mailto:mfrc@anglicarewa.org.au)

**Manjimup** – Financial Counselling, Emergency Relief And Supported Housing Assistance  
Corner Rose and Mount Streets, MANJIMUP WA 6258  
P 9777 1945

**Mt Barker** – Financial Counselling  
1/59 Lowood Road, MOUNT BARKER WA 6324  
P 9851 2611  
E [financialcounselling.mtbarker@anglicarewa.org.au](mailto:financialcounselling.mtbarker@anglicarewa.org.au)

**Narrogin** – Supported Housing Assistance Program Counselling  
P 9845 6083



# A

## ARMADALE, GOSNELLS AND DISTRICT YOUTH RESOURCES

Provides a variety of programs for young people in the community.  
Works with at risk young people. Includes arts, music and holiday activities.

Armadale Lotteries House, 122 Forest Road, ARMADALE WA 6112  
**P** 9497 1722  
**F** 9497 3595  
**E** [info@youthresources.com.au](mailto:info@youthresources.com.au)  
Mon – Fri 8.30am – 4.00pm  
[youthresources.com.au](http://youthresources.com.au)

## ASSOCIATION FOR SERVICES TO TORTURE AND TRAUMA SURVIVORS INC (ASeTTS)

Provides treatment and support to people who have been tortured or traumatised by violent conflicts. Services are free, confidential, and culturally inclusive and are designed for children as well as adults. If you would like to refer a client to ASeTTS please contact the duty counsellor, alternatively you can download a referral form available on the website. Please read the procedure before referring.

286 Beaufort Street, PERTH WA 6000  
**P** 9227 2700  
**F** 9227 2777  
**E** [executive@asetts.org.au](mailto:executive@asetts.org.au)  
Mon – Fri 9.00am – 4.30pm  
[asetts.org.au](http://asetts.org.au)

## ASSOCIATION FOR THE WELFARE OF CHILDREN IN HOSPITAL

The organisation runs a Hospital Familiarisation Program from Kindy to Year 3 to learn about medical equipment and aspects of hospitalisation.

16 Rheola St, WEST PERTH WA 6872  
**P** 0468 740 422  
**E** [admin@awchwa.org.au](mailto:admin@awchwa.org.au)  
[awchwa.org.au](http://awchwa.org.au)

# A

## ASTHMA FOUNDATION OF WA

The Asthma Foundation of WA is a community based, non-profit organisation dedicated to the alleviation of asthma as a cause of morbidity and mortality in our community. The Foundation offers education and support services for people with asthma and their carers, and funds local medical and scientific research into asthma.

36 Ord Street, WEST PERTH WA 6005  
**P** 9289 3600 or 1800 278 462 (toll free)  
**F** 9289 3601  
**E** [ask@asthmawa.org.au](mailto:ask@asthmawa.org.au)  
Mon – Fri 9.00am – 5.00pm  
[asthmaaustralia.org.au](http://asthmaaustralia.org.au)

## BALGA DETACHED YOUTH WORK PROJECT

Support, information, referral and advocacy to young people aged 14 to 19 years at risk in the Mirrabooka district.

72 Finchley Crescent, BALGA WA 6061

**P** 9342 9669

**F** 9343 2006

**E** bdywp@iimetro.com.au

Mon - Fri 9.00am - 5.00pm

### YOUTH HEALTH PROGRAM

Youth Health Program provides direct informal primary health services to at risk young people that experience difficulty in accessing mainstream services. The service operates primarily within the north eastern suburbs of Perth. The community Youth Health Educator conducts health related workshops through local schools. The Health Nurse incorporates one to one counselling and the provision of individual information and support to young people.

## THE BEACON - THE SALVATION ARMY

The Beacon provides emergency, short term and long term accommodation for men aged 18 years and older. All new residents see the welfare officer on arrival so they can be assisted as best suits their individual needs.

9 Aberdeen Street, EAST PERTH WA 6004

**P** 9492 7100

**F** 9313 2729

Mon - Fri 8.00am - 4.00pm

[salvationarmy.org.au](http://salvationarmy.org.au)

## BLACK SWAN

Black Swan Health was established in 2014 as an independent not-for-profit company limited by guarantee. Its primary focus is the provision of high quality primary and mental health services that achieve positive health outcomes for the community.

*See GP4YP (pg 42)*

*See Headspace (pg 43)*

## BRIDGE PROGRAM (SALVATION ARMY WA)

Alcohol and drug rehabilitation, sobering up shelter for intoxicated people, Seven day detoxification program, ages 18 years and older.

Bridge House, 11-15 Wright Street, HIGHGATE WA 6003

**P** 9227 8086

**F** 9227 7302

24 hours, 7 days

## BURDEKIN - YOUTH IN ACTION INC.

The service objective is to improve the level of engagement of homeless young people, or those at risk of homelessness, in family, work, education, training and the community. Provides informal counselling and support services to disadvantaged young people.

33 Louis Street, BROOME WA 6725

**P** 9193 6391 or 1800 998 806 (toll free)

**E** [burdekin@wn.com.au](mailto:burdekin@wn.com.au)

Mon - Fri 8.30am - 4.30pm



## CANTEEN

The Australian Organisation for Young People aged 12 to 24 who are living with cancer.

AH Crawford Lodge, 55 Monash Avenue, NEDLANDS WA 6009

**P** 6260 7771

**F** 6380 1885

**E** [wa@canteen.org.au](mailto:wa@canteen.org.au)

**facebook.com/CANTEENAUSTRALIA**

**canteen.org.au**

## CARERS WA – YOUNG CARERS PROGRAM

Provides information, advice, referral, social support activities (including school holiday programs and camps) and in-school support (including presentations to students and teachers). Young carers are young people aged up to 26 years of age who care for someone with a disability, mental or chronic illness, drug or alcohol issue or is frail.

182 Lord Street, PERTH WA 6000

**P** 1300 CARERS (1300 227 377)

**F** 9228 7448

**E** [info@carerswa.asn.au](mailto:info@carerswa.asn.au)

Mon – Fri 8.30am – 7.30pm

**carerswa.asn.au**

## CENTRECARE

Provides individual, couples and family counselling, youth outreach programs, housing and tenancy support, migrant services.

**centrecare.com.au**

### METRO

**Cannington** – Migrant Services

22 Pattie Street, CANNINGTON WA 6107

**P** 9451 1100

**E** [reception@centrecare.com.au](mailto:reception@centrecare.com.au)

**Gosnells**

2302-2308 Albany Highway, GOSNELLS WA 6110

**P** 9498 9200

**E** [gosnells@centrecare.com.au](mailto:gosnells@centrecare.com.au)



### Joondalup

1st floor, 85 Boas Avenue, JOONDALUP WA 6027

**P** 9300 7300

**E** [joondalup@centrecare.com.au](mailto:joondalup@centrecare.com.au)

### Djoorminda Lockridge

36 Arbon Way, LOCKRIDGE WA 6054

**P** 9378 2522

**E** [Djoorminda@centrecare.com.au](mailto:Djoorminda@centrecare.com.au)

### Midland

Unit 17/53 The Crescent, MIDLAND WA 6056

**P** 9436 0600

**E** [midland@centrecare.com.au](mailto:midland@centrecare.com.au)

### Mirraboooka

12 Brewer Place, MIRRABOOKA WA 6061

**P** 9440 0400

**E** [mirraboooka@centrecare.com.au](mailto:mirraboooka@centrecare.com.au)

### Perth

456 Hay Street, PERTH WA 6000

**P** 9325 6644

**E** [enquiries@centrecare.com.au](mailto:enquiries@centrecare.com.au)

## SPECIALISED SERVICES

### Parent, Adolescent And Family Services

Counselling, support, mediation and training. Call Perth Office for information on a range of services and for regional offices.

456 Hay Street, PERTH WA 6000

**P** 9325 6644

**F** 9221 3631

**E** [enquiries@centrecare.com.au](mailto:enquiries@centrecare.com.au)

Mon and Fri 9.00am – 5.00pm, Tues – Thurs 9.00am – 8.00pm

**centrecare.com.au**

## REGIONAL

### ESPERANCE

**a.** Suites 1 and 3, 8-10 William Street, ESPERANCE WA 6450

**p.** 9083 2600

**e.** [esperance@centrecare.com.au](mailto:esperance@centrecare.com.au), Mon – Fri 9.00am – 5.00pm



**Goldfields**

168 Egan Street, KALGOORLIE WA 6430

**P** 9080 0333

**E** [kalgoorlie@centrecare.com.au](mailto:kalgoorlie@centrecare.com.au)

Mon – Fri 9.00am – 5.00pm

**South West**

103 Clark Street, BUNBURY WA 6230

**P** 9721 5177

**E** [southwest@centrecare.com.au](mailto:southwest@centrecare.com.au)

Mon – Fri 9.00am – 3.00pm

**CENTRE FOR SAFETY AND WELLBEING**

Refuge for women and children who have experienced family and domestic violence. No boys accepted over 18 years.

**Mary Smith**

**p.** 9458 1107

**e.** [marysmith@starick.org.au](mailto:marysmith@starick.org.au)

24 hours, 7 days

**Starrick House**

**P** 9398 5080

**F** 9398 5076

**E** [shaadvocate@starick.org.au](mailto:shaadvocate@starick.org.au)

Mon – Fri 8.00am – 5.00pm (*crisis outside of these times*)

**CHILD AND ADOLESCENT MENTAL HEALTH SERVICE**

Mental Health Services for infants, children, adolescents and youth across the Perth Metropolitan area.

**Perth Children's Hospital**

52-54 Monash Venue, NEDLANDS WA 6009

**P** 6389 5800

**Mental Health Emergency Response Line**

**P** 1800 048 636

**CHILDREN OF PARENTS WITH A MENTAL ILLNESS**

This website provides information and resources for family members across Australia where a parent has a mental illness and for the people who care for and work with them.

**E** [copmi@copmi.net.au](mailto:copmi@copmi.net.au)

**copmi.net.au**

**CITIZEN ADVOCACY PERTH WEST (INC)**

Connecting those with an intellectual disability and promote, facilitate and support advocacy for those with disabilities and limited family support with volunteers.

2A 28 Guthrie Street, OSBORNE PARK WA 6017

**P** 9445 9991 or 9445 1118

**E** [enquiries@capw.org.au](mailto:enquiries@capw.org.au)

Mon – Fri 8.00am – 4.00pm

**capw.org.au**

**CITY OF BELMONT YOUTH AND FAMILY SERVICES**

The City of Belmont Youth and Family Services provides support for young people and their family members who may be experiencing a range of difficult life issues and live within the City of Belmont. The service offers a variety of opportunities that encourage young people and their family members to access support from experienced professionals. These opportunities include a drop-in style games room, one-on-one support and mentoring.

275 Abernethy Road, CLOVERDALE WA 6105

**P** 9477 7222

**F** 9478 1473

**E** [belmont@belmont.wa.gov.au](mailto:belmont@belmont.wa.gov.au)

Mon – Fri 9.00am – 5.00pm

**belmont.wa.gov.au**



## CITY OF BUSSELTON

A number of recreation, youth and community services are provided by the City of Busselton; please contact the Community Development Officer for more information.

Southern Drive, BUSSELTON WA 6280

**P** 9781 0444

**F** 9752 4958

**E** [city@busselton.wa.gov.au](mailto:city@busselton.wa.gov.au)

Mon – Fri 8.30am – 4.30pm

**busselton.wa.gov.au**

## CITY OF CANNING YOUTH AND FAMILY SERVICES

Canning youth accommodation, youth centre activities, school holiday programs for 11 to 17 year olds.

City of Canning, 1317 Albany Highway, CANNINGTON WA 6107

**P** 1300 422 664

**F** 9458 2353

**E** [customer@canning.wa.gov.au](mailto:customer@canning.wa.gov.au)

Mon – Fri 8.15am – 5.00pm

**canning.wa.gov.au**

## CITY OF ROCKINGHAM YOUTH HEALTH SERVICE

Provides a free and confidential health service for young people aged 12 to 24 years. Services are by appointment and include counselling, a sexual health clinic, a GP and community nurses.

9 Baralda Court, ROCKINGHAM WA 6168

**P** 9528 8680

**M** 0401 699 872

**E** [youth@rockingham.wa.gov.au](mailto:youth@rockingham.wa.gov.au)

**rockingham.wa.gov.au**



## CITY OF VINCENT

The City of Vincent can make referrals or provide information on a variety of support services for young people and their families. If you require information on specific services, or are unsure of services available, the Youth Officer will direct you to the appropriate organisation for assistance. The City of Vincent runs Headquarters, a youth facility and Skate park, V Lounge, free low-cost monthly youth events with a variety of activities and themes as well as school holiday programs.

244 Vincent Street, LEEDERVILLE WA 6007

**P** 9273 6000 (council) or 273 6043 (youth officer)

**F** 9273 6099

**E** [mail@vincent.wa.gov.au](mailto:mail@vincent.wa.gov.au)

Mon – Fri 8.00am – 5.00pm

**vincent.wa.gov.au**

## CLINICAL ADVISORY SERVICE

A 24 hour state-wide telephone service for doctors or other health professionals seeking advice about patient management from an alcohol and other drug medical specialist.

**P** 9442 5042 or 1800 688 847 (toll free)

## COCKBURN YOUTH SERVICES

Provides information, support referral, activities and one-on-one support.

Cockburn Youth Centre - 25 Wentworth Parade, SUCCESS WA 6164

**P** 9411 3888

**E** [youth@cockburn.wa.gov.au](mailto:youth@cockburn.wa.gov.au)

Mon - Fri 9.00am – 7.00pm, Sat 9.00am – 4.00pm

**cockburn.wa.gov.au**

## COMMUNICARE

Provides a variety of services, including counselling, a supervised contact program, education and support workshops, childcare, emergency relief, and employment and training services.

28 Cecil Avenue, CANNINGTON WA 6107

**P** 9251 5777

**F** 9350 5770

**E** [info@communicare.org.au](mailto:info@communicare.org.au)

Mon – Fri 8.30am – 4.30pm

**communicare.org.au**

## COMMUNITY DRUG SERVICE TEAMS (CDST)

There are 12 Community Drug Service Teams (CDST) in Western Australia. CDST are located throughout the metropolitan area as well as in a number of rural/regional settings. These services provide individual, couples and family counselling in relation to alcohol/drug issues.

[dao.health.wa.gov.au](http://dao.health.wa.gov.au)

### METRO

**North Metro** – Specialised Youth Worker

26 Dugdale Street, WARWICK WA 6024

**P** 9246 6767

**F** 9246 6768

Mon – Fri 8.30am – 4.30pm

**North East Metro**

14 Sayer Street, MIDLAND WA 6056

**P** 9274 7055

**F** 9274 7066

**E** [desk@cdst.holyoake.org.au](mailto:desk@cdst.holyoake.org.au)

Mon – Fri 9.00am – 5.00pm, Tues and Wed 9.00am – 7.30pm (*evenings by appointment only*)

[holyoake.org.au](http://holyoake.org.au)

**South Metro** – Specialised Youth Worker

**P** 9430 5966 (Fremantle), 9581 4010 (Mandurah), 9529 2500 (Rockingham)

**F** 9335 3071

Mon – Fri 8.30am – 5.00pm

[palmerston.org.au](http://palmerston.org.au)

**South East** – Mission Australia

312 Spencer Road, THORNIE WA 6107

**P** 9267 2400

**F** 9452 2006

**E** [cds@missionaustralia.com.au](mailto:cds@missionaustralia.com.au)

Mon – Fri 8.30am – 12.00pm, 1.00pm – 4.30pm

[missionaustralia.org.au](http://missionaustralia.org.au)

### RURAL

**Goldfields** – Kalgoorlie

28 Macdonald Street, KALGOORLIE WA 6430

**P** 1300 664 137

**F** 9021 3069

Mon – Fri 9.00am – 5.00pm

**Great Southern**

Unit 3, Lower Stirling Terrace, ALBANY WA 6330

**P** 9842 8008

**F** 9842 8719

**E** [albany@palmerston.org.au](mailto:albany@palmerston.org.au)

Mon – Fri 8.30am – 5.00pm

**Kimberley**

Corner Anne and Robinson Streets, BROOME WA 6725

**P** 9194 2640

**F** 9192 3623

Mon – Fri 8.00am – 4.30pm

**Midwest**

Geraldton Head Office, Community Health Building,

51-85 Shenton Street, GERALDTON WA 6530

**P** 9956 2424

**F** 9956 2440

Mon – Fri 8.00am – 4.30pm

**Pilbara**

Corner of Colebatch Way and Raison Court, SOUTH HEDLAND WA 6722

**P** 9174 4800

**F** 9172 8370

Mon – Fri 8.00am – 4.30pm

**Southwest**

109 Beach Road, BUNBURY WA 6230

**P** 9721 9256

**F** 9721 8375

**E** [admin.swcdst@sjog.org.au](mailto:admin.swcdst@sjog.org.au)

Mon – Fri 9.00am – 4.00pm

**Wheatbelt**

95 Wellington Street, NORTHAM WA 6401

**P** 9621 1055 or 1800 447 172 (toll free)

**F** 9621 1077

**E** [holyadmin@holyoake.org.au](mailto:holyadmin@holyoake.org.au)

Mon – Fri 8.00am – 5.00pm



## COMMUNITY FOR THE RESTORATION OF FAMILY TRUST INC. (CROFT)

Crisis accommodation for homeless singles and couples aged 18 years and older.

833 Beaufort Street, INGLEWOOD WA 6052

**P** 9272 6111 (24 hours)

**F** 9272 3108

**E** [enquiries@croft.org.au](mailto:enquiries@croft.org.au)

Mon – Fri 8.00am – 4.00pm

## COMPASSIONATE FRIENDS

An international self-help, non-religious group, offering information and support on the death of a son, daughter, sister, brother or grandchild.

City West Lotteries House, 2 Delhi Street, WEST PERTH WA 6005

**P** 9486 8711

**F** 9486 1299

**E** [info@compassionatefriendswa.org.au](mailto:info@compassionatefriendswa.org.au)

Mon – Fri 10.00am – 2.00pm

[compassionatefriendswa.org.au](http://compassionatefriendswa.org.au)

## CONNECT GROUPS

Connects people with self help and support groups and assists in the set up process and maintenance of self-help support groups.

10 Almondbury Road, BOORAGOON WA 6154

**P** 9364 6909 or 1800 195 575 (toll free – country callers only)

**F** 9364 4471

**E** [info@connectgroups.org.au](mailto:info@connectgroups.org.au)

Mon – Fri 8.00am – 4.00pm

[connectgroups.org.au](http://connectgroups.org.au)

## CONSUMERS OF MENTAL HEALTH (CoMHWa)

CoMHWa coordinates, promotes and supports the consumer voice within mental health services and the wider community through consultation, systematic advocacy, supporting peer support and services, partnerships and relationships, education, training and awareness and raising community awareness.

31 Manning Road, CANNINGTON WA 6107

**P** 9258 8911

**E** [admin@comhwa.org.au](mailto:admin@comhwa.org.au)

Mon – Fri 9.00am – 5.00pm

[comhwa.org.au](http://comhwa.org.au)

## CREATE FOUNDATION

The foundation improves life opportunities for Australian children and young people from birth to 18 years who do not live with their natural parents and who are in alternative care.

353, Newcastle St, NORTHBRIDGE WA 6003

**P** 6336 9726 or 1800 655 105 (toll free)

**E** [wa@create.org.au](mailto:wa@create.org.au)

Mon – Fri 9.00am – 5.00pm

[create.org.au](http://create.org.au)

## CRISIS CARE

Telephone information and counselling service (24 hours) for people in crisis needing urgent help.

**P** 9223 1111 or 1800 199 008 (toll free)

[dcp.wa.gov.au](http://dcp.wa.gov.au)

## CROSSROADS YOUTH ACCOMMODATION

Provides supported accommodation to young people who are homeless or at risk of homelessness.

333 William St, NORTHBRIDGE WA 6003

**P** 9144 4169

# C

## CROSSROADS WEST – TRANSITIONAL SUPPORT SERVICE (TSS)

Support service for young people aged 14 to 25 years old, who are leaving the care of the Department for Child Protection.

Administration, Level 3, 333 William Street, NORTHBRIDGE WA 6003

**P** 9260 9551

**F** 9328 1655

Mon – Fri 8.30am – 4.30pm

[salvationarmy.org.au](http://salvationarmy.org.au)

## CYRENIAN HOUSE - DRUG TREATMENT AND REHABILITATION CENTRE

318 Fitzgerald Street, PERTH WA 6000

**P** 9328 9200

**F** 9227 7431

**E** [enquiry@cyrenianhouse.com](mailto:enquiry@cyrenianhouse.com)

Mon – Fri 9am – 5.00pm

[cyrenianhouse.com](http://cyrenianhouse.com)

# D

## DEPARTMENT FOR CHILD PROTECTION

The department's major focus is on meeting the needs of vulnerable children and families. It is responsible for protecting and caring for children, and supporting people at risk of crisis.

189 Royal Street, EAST PERTH WA 6004

**P** 9222 2555 or 1800 622 258 (toll free)

**F** 9222 2776

[dcp.wa.gov.au](http://dcp.wa.gov.au)

## DEPARTMENT OF HEALTH (DoH)

The Western Australian Department of Health has a website that lists health services in Western Australia. It also provides health related websites on a number of topics.

[health.wa.gov.au](http://health.wa.gov.au)

### GET THE FACTS

Get the Facts was developed by the Sexual Health and Blood-borne Virus Program, Department of Health WA. The website aims to provide accurate and reliable information on sexual health, blood-borne viruses and relationships for young people aged 14 to 17 years in Western Australia.

**E** [getthefacts@health.wa.gov.au](mailto:getthefacts@health.wa.gov.au)

[getthefacts.health.wa.gov.au](http://getthefacts.health.wa.gov.au)

## DEPARTMENT OF SPORT AND RECREATION – YOUTH

The youth unit facilitates opportunities for young people statewide to participate in leadership programs. It also provides advice on youth issues for sporting clubs, state sporting associations, schools and other key community and government organisations involved in the delivery of sport and recreation.

246 Vincent Street, LEEDERVILLE WA 6007

**P** 9429 9700

**F** 9429 9711

**E** [info@dsr.wa.gov.au](mailto:info@dsr.wa.gov.au)

[dsr.wa.gov.au](http://dsr.wa.gov.au)

# D

## DEVENISH LODGE

24 hour psychiatric support for those over 18.

54 Devenish Street, EAST VICTORIA PARK WA 6101

**P** 9362 1545

**waamh.org.au**

## DOMESTIC VIOLENCE CHILDREN'S COUNSELLING SERVICES (DVCCS)

Crisis counselling for children who have witnessed/experienced family violence. Provides help to children and their families through Supported Accommodation Assistance Program and confidential counselling with individuals and sibling groups.

**P** 9328 1888

**F** 9228 0464

**patgilescentre.org.au**

Mon – Fri 9.00am – 5.00pm

## DRUG AND ALCOHOL YOUTH SERVICE (DAYS)

DAYS is a partnership between Mission Australia and Next Step. The service provides individuals and their families with a comprehensive range of alcohol and other drug services. Case management, withdrawal and respite and residential rehabilitation services are provided for young people aged 12 to 19 years. Treatment services offered include: comprehensive assessment, case management, individual counselling, medical assessment and review, clinical psychology services, group programs, Aboriginal and youth mentors, opiate and alcohol pharmacotherapy, parent and family counselling, complementary therapies.

129 Hill Street, EAST PERTH WA 6004

**P** 9222 6300

**F** 9222 6301

Mon – Fri 8.30am – 4.30pm

**missionaustralia.com**

# D

## DUNGEON YOUTH CENTRE

The Dungeon Youth Centre is a drop-in and support service for young people aged 8 - 11 and 12 - 17 years which serves as a safe environment for young people residing, recreating or educating within Ballajura and the surrounding suburbs.

1 Kingfisher Avenue, BALLAJURA, WA

**P** 9249 8601

**F** 9249 8591

Mon – Fri 9.00pm – 5.00pm (office), Tues, Wed and Fri 3.00pm – 5.00pm (drop in)

**dungeonyouthcentre.org**



# E

## EASTERN GOLDFIELDS SEXUAL ASSAULT RESOURCE CENTRE (EGSARC)

Offers a free, confidential, professional counselling and support service for people, aged 13 years and over, who have been impacted by sexual assault and/or past sexual abuse. A free 24 hour crisis service is also offered, after hours this service is accessed through Crisis Care. Community education workshops are available.

11 Porter Street, KALGOORLIE WA 6430  
P 9091 1922 or 1800 688 922 (toll free – 24 hour Crisis Care)  
F 9091 1918  
E [sarckal@westnet.com.au](mailto:sarckal@westnet.com.au)  
[grsi.org.au](http://grsi.org.au)

## EDVENTURES WA

Currently engages hundreds of at-risk young people each through its three core programs: the school based youth worker program, the young women's and men's healthy lifestyles after-school program and the Young Dragons program for young people not attending school.

61 Dellar Road, MADDINGTON WA 6109  
P 9452 7911  
F 9452 1533  
E [info@edventures.org.au](mailto:info@edventures.org.au)  
[edventures.org.au](http://edventures.org.au)

# F

## FAMILY COURT COUNSELLING SERVICE

Dispute resolution for separating parents.

Level 3, 150 Terrace Road, PERTH WA 6000  
P 9224 8222 or 1800 199 228 (toll free)  
F 9224 8360  
Mon – Fri 9.00am – 4.00pm  
[courts.dotag.wa.gov.au](http://courts.dotag.wa.gov.au)

## FAMILY HELPLINE

Confidential telephone counselling and information service for families experiencing relationship difficulties.

189 Royal St, EAST PERTH WA 6004  
P 9223 1100 or 1800 643 000 (toll free – 24 hours)  
Mon – Sun 8.00am – 8.00pm

## FAMILY RELATIONSHIPS

Family Relationships Online provides all families (whether together or separated) with access to information about family relationship issues, ranging from building better relationships to dispute resolution. Has a teen section with relevant information on family and relationship issues, and services available.

### FAMILY RELATIONSHIP ADVICE LINE

P 1800 050 321 (toll free – 24 hours)  
[familyrelationships.gov.au](http://familyrelationships.gov.au)

## FAMILY THERAPY CONSULTANCY

Outpatient referral required. It is not an acute service and there is an admission process.

9 Mills St, BENTLEY WA 6102  
P 9351 8084  
F 9258 3002  
E [info@familytherapy.com.au](mailto:info@familytherapy.com.au)  
[familytherapy.com.au](http://familytherapy.com.au)

# F

## FIONA STANLEY HOSPITAL

Fiona Stanley Hospital (FSH) is located in Murdoch and is the major tertiary hospital in the south metropolitan area. The hospital is part of the Fiona Stanley Fremantle Hospitals Group and the South Metropolitan Health Service (SMHS) hospital network.

11 Robin Warren Drive, MURDOCH WA 6150

**P** 6152 2222

24 hours

**fionastanley.health.wa.gov.au**

### MENTAL HEALTH UNIT - YOUTH

The Fiona Stanley Hospital Youth Unit is a 14-bed inpatient unit providing short to medium term mental health inpatient care and treatment services for young people aged 16-24 years. This unit is located in the Fiona Stanley Hospital Mental Health Service. Treatment is provided for mental health issues such as: anxiety, mood problems, emerging psychosis, enduring emotional distress and behavioural issues. Problems or issues related to alcohol and drugs are also welcomed.

## FREEDOM CENTRE

Freedom Centre is a safe space for people aged 26 and under who are coming to terms with their sexuality. The Centre provides peer support and advocacy as well as offering some support and personal development courses throughout the year. Young people can arrive without appointment during the open hours. Young people with multiple needs should be referred to the coordinator.

93 Brisbane Street, NORTHBRIDGE WA 6000

**P** 9228 0354

**F** 9482 0001

**E** [info@freedom.org.au](mailto:info@freedom.org.au)

7 days 3.00pm - 12.00am

**freedom.org.au**

## FREMANTLE HOSPITAL

Alma Street, FREMANTLE WA 6160

**P** 9431 3333

**fhhs.health.wa.gov.au**

### SOUTH TERRACE CLINIC (SEXUAL HEALTH)

Offers a wide range of multidisciplinary services to treat, screen and educate people about sexually transmitted infections

**P** 9431 2149

# F

## FREO STREET DOCTOR - BLACK SWAN HEALTH

Mobile service providing free, visible easily accessible, culturally appropriate and non-judgmental medical services for street based people in Fremantle. Services include minor suturing, opportunistic vaccinations, screening for STIs and BBV and referrals to other services. An Aboriginal health worker works on Freo Street Doctor providing comfort and security for Indigenous clients.

**P** 9432 0480

**E** [freostreetdoctor@blackswanhealth.com.au](mailto:freostreetdoctor@blackswanhealth.com.au)

**blackswan.com.au**

## FRESH START RECOVERY PROGRAMME

Fresh Start is a not-for-profit organisation established to help families with addictions. Fresh Start's services include alcohol and other drug treatment programs, GP clinic, counselling, housing support and chaplaincy.

65 Townshend Road, SUBIACO WA 6008

**P** 9381 1333

**F** 9388 7073

**E** [info@freshstart.org.au](mailto:info@freshstart.org.au)

Mon - Fri 8.30am - 5.00pm

**freshstart.org.au**

## FUSION STUDENT HOUSEHOLD

Long term supported accommodation for homeless young people. Three live in young adult staff. External support to enable continuation of education and improvement in family relationships. Ages 16 years and older. Email for more information.

1 Pusey Street, BENTLEY WA 6102

**P** 9355 1159

**E** [fshsperth@fusion.org.au](mailto:fshsperth@fusion.org.au)

**perth.fusion.org.au**

# G

## GENDER DIVERSITY ASSESSMENT AND CONSULTATION CLINICAL PSYCHOLOGIST SERVICE

This service is suitable for gender diverse youth who are seeking specialist assessment for suitability for gender affirming medical interventions and who are either presenting with complex co-occurring issues or unable to access these specialist assessments elsewhere.

223 James St, NORTHBRIDGE, WA 6003  
P 1300 362 569  
F 9287 5762  
E [youthmhtriage@health.wa.gov.au](mailto:youthmhtriage@health.wa.gov.au)  
Mon – Fri 8.30 – 4.30pm

## GP DOWN SOUTH

GP Down South is a not for profit, community organisation providing health and wellbeing services in the South West and Peel regions of Western Australia.

3/69 Duchess Street, BUSSELTON, WA 6280  
P 9754 3662  
F 9752 4835  
E [mhteam@gpdownsouth.com.au](mailto:mhteam@gpdownsouth.com.au)  
[gpdownsouth.com.au](http://gpdownsouth.com.au)

### PEEL YOUTH MEDICAL SERVICE (PYMS)

Billy Dower Youth Centre Dower Street, MANDURAH WA 6210  
P 08 9583 5435  
F 08 9583 5863  
E [office@peelyouthmedicalservice.com.au](mailto:office@peelyouthmedicalservice.com.au)

## GP4YP

GP4YP is a youth friendly, free, confidential medical practice for young people. The practice specialises in health issues specific to young people with complex mental health issues.

P 9432 0480  
E [GP4YP@blackswanhealth.com.au](mailto:GP4YP@blackswanhealth.com.au)  
Mon – Fri 8.30am – 4.30pm

# H

## HEADSPACE

The headspace program is a one-stop-shop and free youth support service, which provides mental, emotional and physical health support, information and services to young people aged 12 to 25 and their families.

[headspace.org.au](http://headspace.org.au)

### Albany

St Emilie Way, ALBANY WA 6330  
P 9842 9871  
F 9842 6201  
E [info@headspacealbany.com.au](mailto:info@headspacealbany.com.au)  
Mon, Tue, Thurs 9.00am – 5.00pm, Wed 9.00am – 8.00pm, Fri 9.00am – 5.00pm

### Armadale

40 Fourth Road, ARMADALE WA 6112  
P 9393 0300  
F 9393 0399  
E [info@headspacearmadale.com.au](mailto:info@headspacearmadale.com.au)

### Busselton

71 Kent Street, BUSSELTON WA 6280  
P 6164 0680  
E [busselton@headspacebunbury.org.au](mailto:busselton@headspacebunbury.org.au)  
Tues 12.30pm – 8.30pm, Wed – Fri 9.00pm – 5.00pm

### Bunbury

8 Spencer Street, BUNBURY WA 6230  
P 6164 0680  
E [info@headspacebunbury.org.au](mailto:info@headspacebunbury.org.au)  
Mon 9.00am – 5.00pm, Tues and Wed 9.00am – 8.30pm, Thurs – Fri: 9.00am – 5.00pm

### Fremantle

60-62 Pakenham St, FREMANTLE WA 6160  
P 9431 7453  
E [info@headspacefremantle.com.au](mailto:info@headspacefremantle.com.au)  
Mon – Fri 9.00am – 4.00pm

### Geraldton

193 Marine Terrace, GERALDTON WA 6530  
P 9943 8111  
F 9943 8122  
E [admin@headspacegeraldton.com.au](mailto:admin@headspacegeraldton.com.au)  
Mon – Fri 8.30am – 4.30pm

**Joondalup**

Suite G8, 126 Grand Boulevard, JOONDALUP WA 6027

**P** 9301 8900

**E** [info@headspacejoondalup.com.au](mailto:info@headspacejoondalup.com.au)

Mon – Wed 8.30am – 4.30pm, Thurs: 8.30am – 7.00pm, Fri 8.30am – 4.30pm, Sat 9.00am – 5.00pm

**Kimberley**

Shop A, 38 Frederick Street, BROOME WA 6725

**P** 9193 6222

**F** 9193 6122

**E** [headspace@kamsc.org.au](mailto:headspace@kamsc.org.au)

Mon – Fri 8.00am – 4.30pm

**Midland**

7/64 Morrison Rd, MIDLAND WA 6056

**P** 9274 8859

**E** [reception@headspacemidland.com.au](mailto:reception@headspacemidland.com.au)

Mon – Fri 9.00am – 5.00pm

**Pilbara** – Headspace Pilbara is Australia's first innovative headspace service, providing outreach-based headspace services to young people aged 12-25 through co-location with Pilbara community, education and health services.

PO Box 1241, KARRATHA WA 6714

**P** 1800 290 626

**E** [info@headspacepilbara.org.au](mailto:info@headspacepilbara.org.au)

**Rockingham**

3/18 Goddard St, ROCKINGHAM WA 6168

**P** 6595 8888

**E** [hello@headspacerock.com.au](mailto:hello@headspacerock.com.au)

Mon 8.30am – 6.00pm, Tue 8.30am – 4.30pm, Wed 8.30am – 6.00pm, Thurs and

Fri 8.30am – 4.30pm

**HEALTHDIRECT**

HealthDirect Australia is a 24 hour telephone health advice line staffed by Registered Nurses to provide health advice.

**P** 1800 022 222 or 1800 882 436 (pregnancy, birth and baby help line)

**healthdirect.gov.au**

**HEART FOUNDATION**

Smarter than Smoking aims to prevent the uptake of smoking among children aged 10 to 15 years in WA. The OxyGen website helps young people explore the facts about smoking and the tobacco industry for themselves through interactive content and video clips.

334 Rokeby Road, SUBIACO WA 6008

**P** 9388 3343

**E** [contactus@heartfoundation.org.au](mailto:contactus@heartfoundation.org.au)

Mon – Fri 9.00am – 5.00pm

**smarterthansmoking.org.au**

**HELPING MINDS**

Provides youth support services for young people with a family member or friend with a mental illness.

182-188 Lord Street, PERTH WA 6000

**P** 1800 811 747 or 0418 972 134

**F** 9427 7119

**E** [info@helpingminds.org.au](mailto:info@helpingminds.org.au)

Mon – Fri 8.30am – 4.30pm

**helpingminds.org.au**

**HEPATITIS WA**

Hepatitis WA provides a variety of services to inform and raise awareness about viral hepatitis (predominantly hepatitis C) for individuals infected with or affected by viral hepatitis (predominantly hepatitis C). A telephone Information/Support service helps people who have concerns or questions about hepatitis C. One-to-one counselling is available by appointment. Limited quantities of injecting equipment are also available.

134 Aberdeen Street, NORTHBRIDGE WA 6003

**P** 9328 8538 or 1800 800 070 (toll free – country callers)

**E** [info@hepatitiswa.com.au](mailto:info@hepatitiswa.com.au)

**hepatitiswa.com.au**

Mon – Fri 9.00am – 5.00pm

## HOLYOAKE

A range of programs offering support and counselling for those whose lives are affected by addictions of their own or another's.

75 Canning Highway, VICTORIA PARK WA 6100

**P** 9416 4444

**F** 9416 4443

**E** [client@holyoake.org.au](mailto:client@holyoake.org.au)

Mon 8.30am – 4.45pm, Tues, Wed and Thurs 8.30am – 8.00pm

[holyoake.org.au](http://holyoake.org.au)

## METRO

### Midland

4 Stafford Street, MIDLAND WA 6050

**P** 9274 7055

**F** 9274 7066

Mon – Fri 8.30am – 4.30pm, Tues and Wed (evenings by appointment only)

## REGIONAL

### Narrogin

Wheatbelt Community Drug Service, William Road, NARROGIN WA 6312

**P** 9881 1999 or 1800 447 172 (toll free)

### Northam

4 Elizabeth Place, NORTHAM WA 6401

**P** 9621 1055 or 1800 447 172 (toll free)

## HOPE COMMUNITY SERVICES

Provides counselling and education seminars, residential rehabilitation and supervised bail as well as information, support and referrals in a number of locations.

## COUNSELLING SERVICES

Counselling to support people affected by their own or a loved one's alcohol and other drug use, and co-occurring mental health problems. Counselling and parenting support through individual, couples counselling and group programs.

### Armadale

1st Floor, 56 Fourth Road, ARMADALE WA 6112

**P** 9497 9498

**F** 9497 9424

Mon – Fri 9.00am – 5.00pm

[hopecommunityservices.org.au](http://hopecommunityservices.org.au)

## GOLDFIELDS COMMUNITY ALCOHOL AND DRUG SERVICE

A range of services to support people affected by their own or a loved one's alcohol and other drug use, and co-occurring mental health problems.

### Esperance

Suite 1, 75-79 Dempster Street, ESPERANCE WA 6450

**P** 9071 5169

Mon – Fri 9.00am – 5.00pm

### Kalgoorlie

48 Bookman Street, KALGOORLIE WA 6433

**P** 9021 3069

**E** [receptionkalgoorlie@hopecs.org.au](mailto:receptionkalgoorlie@hopecs.org.au)

Mon – Fri 9.00am – 5.00pm

### Leonora

2/72 Tower Street, LEONORA WA 6438

**P** 9037 7661

Mon – Fri 9.00am – 5.00pm



## INCEST SURVIVORS ASSOCIATION

Individual counselling, group therapy, education, parenting training. Survivors (and non-offending or early onset significant others) of child sexual abuse aged 8 years and older. Self-referral is preferable. Self-help library for members. Provides professional training to community or study groups for a minimal fee.

404 Walcott Street, COOLBINIA WA 6050  
**P** 9443 1910  
**F** 9227 1510  
Mon – Fri 9.00am – 5.00pm  
**phoenix.asn.au**

## INCLUSION WA

An organisation dedicated to enriching lives of all people who may be disadvantaged, disconnected from society or living with a disability. Individualised programs to help young people connect with their community through sports, art, recreation and social groups. Also run regional school holiday programs and professional development workshops for Human Services workers.

Unit 4, 61 Walters Drive, OSBORNE PARK WA 6017  
**P** 9201 8900  
**F** 9443 8799  
**E** [info@inclusionwa.org.au](mailto:info@inclusionwa.org.au)  
Mon – Fri 9.00am – 4.00pm  
**inclusionwa.org.au**

## INDIGO JUNCTION

Accommodation for 15 to 25 year olds as well as families and Aboriginal persons. Referral forms are available on the website.

53 Great Northern Highway, MIDLAND WA 6056  
**P** 9274 5382  
**F** 9250 1513  
**E** [admin@indigojunction.org.au](mailto:admin@indigojunction.org.au)  
24 hour service, Mon – Fri 8.30am – 4.30pm (office)  
**indigojunction.org.au**

## INTELIFE

To help young people with moderate to severe disabilities to find and keep integrated paid work through: career planning, job planning, sampling, training and development, transport support, recreation, financial assistance and income support.

**Head office** – 11 Kirke Street, BALCATTA WA 6021  
**P** 6169 1100  
**F** 9240 1846  
**E** [central@intelife.org](mailto:central@intelife.org)  
Mon – Fri 8.30am – 5.00pm  
**intelife.org**

**Midvale Respite Centre** – 2 Dayana Close, MIDVALE WA 6056  
**P** 9274 2688  
**E** [midland@intework.org](mailto:midland@intework.org)

## SOUTH EAST METROPOLITAN

10 Fremantle Road, GOSNELLS WA 6110  
**P** 6169 1160  
**F** 9398 5666  
**E** [gosnells@intelife.org](mailto:gosnells@intelife.org)

Gosnells Respite Centre – Unit 1/2328 Albany Highway, GOSNELLS WA 6110  
**P** 9398 6888

## WEST METROPOLITAN

**Fremantle**  
Unit 41, 13-15 Cantonment Street, FREMANTLE WA 6160  
**P** 9435 8700  
**F** 9433 4253  
**E** [fremantle@intework.org](mailto:fremantle@intework.org)

**South Lake**  
South Lake Shopping Centre, Shop 10/49 Berrigan Drive, SOUTH LAKE WA 6164  
**P** 6169 1250  
**F** 9414 1272  
**E** [southlake@intelife.org](mailto:southlake@intelife.org)

## SOUTH WEST REGIONAL

**Busselton**  
88-90 Kent Street, BUSSELTON WA 6280  
**P** 6169 1230  
**E** [southwest@intelife.org](mailto:southwest@intelife.org)

**Greenfields**

8 Cumberland Street, GREENFIELDS WA 6210

**P** 6169 1220

**F** 9583 3295

**E** greenfields@intefe.org

**Warnbro**

Warnbro Respite Centre, 1 Moreton Crescent, WARNBRO WA 6169

**P** 9593 8900

**E** rockingham@intefe.org

**NORTH METROPOLITAN****Joondalup**

Joondalup Respite Centre, Unit 8/210 Winton Road, JOONDALUP WA 6027

**P** 9300 2544

**E** respite@intelife.org

Unit 13/200 Winton Road, JOONDALUP WA 6027

**P** 6169 1180

**F** 9300 9423

**E** joondalup@intelife.org

**EAST METROPOLITAN****Midland**

21 Keane Street, MIDLAND WA 6056

**P** 6169 1200

**F** 9274 7718

**E** midland@intework.org

**JOONDALUP HEALTH CAMPUS**

Corner Grand Boulevard and Shenton Avenue, JOONDALUP WA 6027

**P** 9400 9400

**F** 9400 9055

joondaluphealthcampus.com.au

**JUNGARNI-JUTIYA (INDIGENOUS CORPORATION)**

Provides money management, financial counselling, tobacco reduction, banking support and beyond gambling services.

Lot 94 Thomas Street, HALLS CREEK WA 6770

**P** 9168 6168

**F** 9168 6205

**E** ceo@jungarni.org

Mon – Fri: 4.00pm – 11.30pm

**jungarni.org**

# K

## KARRATHA YOUTH HOUSING PROJECT

Emergency short term accommodation. Support to obtain and maintain accommodation for 14 to 25 year olds in the Pilbara region.

7 Goodwyn Close, MILLERS WELL WA 6714

**P** 9144 1881

**F** 9183 8648

**E** [karratha.youth@aus.salvationarmy.org](mailto:karratha.youth@aus.salvationarmy.org)

## KIMBERLEY MENTAL HEALTH PORTAL

Kimberley Mental Health & Drug Service (KMHDS) provides specialist mental health and Alcohol & Drug services to the Kimberley region. The service aims to deliver a comprehensive range of high quality; community focused mental health and drug services to residents of & visitors to the Kimberley. The Mental Health teams' primary aim is to treat people suffering from a clinically diagnosed mental illness.

**Broome** – Corner Anne Street & Robinson Street, BROOME WA 6725

**P** 9192 7888

**F** 9192 7888

**E** [reception@boabhealth.com.au](mailto:reception@boabhealth.com.au)

**Kununurra** – 96 Coolibah Drive, KUNUNURRA WA 6743

**P** 9168 2560

**E** [knxreception@boabhealth.com.au](mailto:knxreception@boabhealth.com.au)

## KING EDWARD MEMORIAL HOSPITAL FOR WOMEN (KEMH)

374 Bagot Road, SUBIACO WA 6008

**P** 6458 2222

**F** 9388 1780

8.00am – 1.00pm, 3.00pm – 8.00pm, Clinic (8.00am – 5.00pm), Emergency Obstetrics (24 hours)

**kemh.health.wa.gov.au**

### ADOLESCENT ANTENATAL CLINIC

Provides antenatal and post-natal support to adolescent mothers aged 17 and under in metropolitan Perth. Young mothers receive visits and calls to consolidate education and parenting skills support. Must have a referral from a GP.

374 Bagot Road, SUBIACO WA 6008

**P** 9340 1379 (ask for an adolescent clinic midwife)

**E** [kemh.occu@health.wa.gov.au](mailto:kemh.occu@health.wa.gov.au)

**[kemh.health.wa.gov.au/services/adol\\_antenatal/index.htm](http://kemh.health.wa.gov.au/services/adol_antenatal/index.htm)**

# L

## LEGAL AID (YOUTH LAW TEAM)

Legal Aid WA has a specialist team of lawyers who will provide legal assistance to young people including phone advice, personal appointments and representation in court. A free duty lawyer service is also available.

32 St Georges terrace, PERTH, WA

**P** 9261 6222 or 1300 650 579 (toll free)

**F** 9325 5430

Mon – Fri 9.00am – 4.00pm

**[legalaid.wa.gov.au](http://legalaid.wa.gov.au)**

## LIFELINE WA

National, 24 hour, free telephone crisis support.

Suite 44A, 7 Aberdeen Street, PERTH WA 6000

**P** 9261 4444 or 13 11 14 (24 hours)

**F** 9421 1247

**E** [reception@lifelinewa.org.au](mailto:reception@lifelinewa.org.au)

Mon – Fri 9.00am – 5.00pm

**[lifelinewa.org.au](http://lifelinewa.org.au)**

## LIVING PROUD

Telephone counselling and information service, shared accommodation register, social support groups, brief telephone counselling, information and referral, a shared accommodation register, social support groups for GLBTI people, a public speaking program (for schools and organisations), clearing the way workshops for organisations covering sexuality and gender diversity. Most efficient way to make contact is by email.

City West Lotteries House, 2 Delhi Street, WEST PERTH WA 6005

**P** 9420 7201 (counselling)

**P** 9486 9855 (administration)

**P** 1800 184 527 (toll free)

**F** 9486 9855

**E** [admin@livingproud.org.au](mailto:admin@livingproud.org.au)

Mon – Sun 3.00pm – 12.00am (Counselling Line)

**[livingproud.org.au](http://livingproud.org.au)**

# L

## LOCAL DRUG ACTION GROUPS (LDAG)

Local Drug Action Groups focus their work on engaging and supporting communities to prevent and reduce alcohol and other drug related harm. Programs include: alternative activities for youth, support and information for parents and families, issuing drug educational material and information throughout the community, and monitoring local issues and trends.

Workzone East, 1 Nash Street, PERTH WA 6000

**P** 9471 0434 or 1800 532 407 (toll free)

**F** 9272 6605

**E** [ldaginc@mhc.wa.gov.au](mailto:ldaginc@mhc.wa.gov.au)

**localdrugaction.com.au**

## LORIKEET CENTRE

Employment, recreation and education programs for those with a primary diagnosis of mental illness for young people over 18 years. A psychosocial rehabilitation service, a gymnasium, computers and hot nutritious meals prepared for lunch. Activities include fishing, painting, movies, swimming, BBQ's and nature walks.

104 Cambridge Street, WEST LEEDERVILLE WA 6901

**P** 9273 8951

**F** 9381 9495

**E** [lorikeet@mifwa.org.au](mailto:lorikeet@mifwa.org.au)

Tues – Fri 9.00am – 4.30pm

**mifwa.org.au**

# M

## MAKE-A-WISH AUSTRALIA

Grants the wishes of children living with life-threatening medical conditions. Children aged 3 to 18 are able to apply for a Wish. Children under 3 may apply for a Wish Hamper, which includes a selection of age appropriate toys.

PO Box 5006, BURNLEY VIC 3121

**P** 1800 032 260 (toll free)

**F** (03) 9426 0799

**E** [enquiries@makeawish.org.au](mailto:enquiries@makeawish.org.au)

Mon – Fri 8.30am – 6.00pm AEST

**makeawish.org.au**

## MARIE STOPES INTERNATIONAL

Dedicated and specialized doctors, nurses and support team ensure every client receives immediate help and support in a personalised and confidential manner. Services include: abortions, contraception advice and insertion, STI/STD check-ups, treatment and advice, vasectomies.

8 Sayer Street, MIDLAND WA 6056

**P** 1300 315 664 (toll free)

**E** [info@mariestopes.com.au](mailto:info@mariestopes.com.au)

**mariestopes.com.au**

**likeitis.org.au**

## MENSLINE AUSTRALIA – YOUNG MEN

MensLine Australia is a professional telephone, online text and video support, counselling information and referral service for men (15 years+), specialising in family and relationship concerns.

**P** 1300 78 99 78 (toll free)

**E** [talkitover@menslineaus.org.au](mailto:talkitover@menslineaus.org.au)

**mensline.org.au**

## MENTAL HEALTH COMMISSION

The Drug and Alcohol Office is the government agency responsible for drug and alcohol strategies and services in Western Australia. The agency provides or contracts a statewide network of treatment services, a range of prevention programs, professional education and training and research activities.

1 Nash St, PERTH, WA 6000  
**P** 9370 0333 (number auto directed to MHC)  
**F** 9272 6605  
**E** [dao@health.wa.gov.au](mailto:dao@health.wa.gov.au)  
 Mon – Fri 8.30am – 4.30pm (except public holidays)  
[mhc.wa.gov.au](http://mhc.wa.gov.au)

## MENTAL HEALTH EMERGENCY RESPONSE LINE (MERL)

Telephone information or callout for over 16s experiencing a psychotic episode or at immediate risk.

**P** 1300 555 788, 1800 552 002 (toll free – Rural Link), 1800 676 822 (Peel)  
 24 hours

## MINNAWARRA HOUSE - ROBERTA JULL YOUTH AND FAMILY COUNSELLING SERVICE

Youth and Counselling Service for 12 to 18 year olds and their families, drama program for 8 to 13 year olds and other family support services.

24 Numulgi Street, ARMADALE WA 6112  
**P** 9497 1413  
**F** 9497 1595  
**E** [minnahouse@bigpond.com](mailto:minnahouse@bigpond.com)  
 Tues – Fri: 9.30am – 3.30pm (appointments outside hours can be arranged)  
[minnahouse.org.au](http://minnahouse.org.au)

## MISSION AUSTRALIA – YOUTH ACCOMMODATION SUPPORT SERVICE (YASS)

YASS provides emergency accommodation for 15 to 18 year olds, assists in seeking long term accommodation, further education and developing life skills. The external program accommodates young people up to 25 years old.

**P** 9329 4480  
**F** 9445 7570  
 Team Leader or Youth Worker 24 hours  
[missionaustralia.com.au](http://missionaustralia.com.au)

## MH CONNEXT

MH Connex is a new care management program available for people with severe and complex mental illness, whose needs are predominately being managed in primary care. The new program is being introduced by WAPHA as part of the new stepped care model to deliver Integrated Primary Mental Health Care services across the State. Initially this program has only been made available to select GPs in the metropolitan region during the first phase implementation.

29, Manning Road, CANNINGTON, WA 6107  
**P** 1800 742 466  
**E** [mh.connex@rw.org.au](mailto:mh.connex@rw.org.au)  
 Mon – Fri 9.00am – 5.00pm

## MH PORTAL – 360 HEALTH + COMMUNITY

As a registered charity, we use the profits from our private allied health and counselling services, specialist GP clinics and in-home support business to provide free and low cost health and community programs to those who need them most.

360 Health Centre - 48A James Street, GUILDFORD 6055  
**P** 1300 706 922

### SOUTH METRO

360 Health Centre - 5/51A Church Ave, ARMADALE 6112  
**P** 6595 8980

### MIDWEST

360 Health Centre - 254 Foreshore Drive, GERALDTON  
**P** 9960 6800  
**F** 6210 1447



# M

---

## GOLDFIELDS

360 Health Centre – Viskovich House – 6/377 Hannan Street, KALGOORLIE 6430

**P** 9960 6800

**F** 6210 1447

# N

---

## NGALA

Provides the Parenting Help Line, Parent Support, parenting programs on request, and community information.

9 George Street, KENSINGTON

**P** 9368 9368 or 1800 111 546

**ngala.com.au**

## NOONGAR ALCOHOL AND SUBSTANCE ABUSE SERVICES (NASAS)

Alcohol and other drug help for Aboriginal people. A confidential service that aims to help Aboriginal people face alcohol and other drug misuse in a holistic and culturally appropriate manner.

211 Royal Street, EAST PERTH WA 6004

**P** 9221 1411

**F** 9221 1585

Mon – Fri 9.00am – 4.00pm

**aads.org.au**

## NORTH METROPOLITAN HEALTH SERVICE - MENTAL HEALTH

Youth Mental Health community services consist of Youth Axis, Youth Hospital in the Home, YouthLink and YouthReach South who work collaboratively to provide a range of specialist youth mental health services to improve the young people in Perth, Western Australia.

QEII Medical Centre, T Block NEDLANDS WA 6009

**P** 6457 3333

See services – Youth Axis, Youth Hospital in the Home, YouthLink and YouthReach.



## ONSLow YOUTH SERVICE

Lot 246, Poinciana Street TOM PRICE WA 6751  
**P** 9181 3301  
**E** [activity.office@ashburton.wa.gov.au](mailto:activity.office@ashburton.wa.gov.au)  
[ashburton.wa.gov.au/visit-ashburton/onslow](http://ashburton.wa.gov.au/visit-ashburton/onslow)

## OPEN DOORS YOUTH AND FAMILY COUNSELLING SERVICE

Open Doors is a therapeutic counselling and mediation service for young people aged 12 to 18 years and their families. It's a free service for young people in the Mirrabooka area and surrounding suburbs. Counselling can be conducted in the home, at school, the Open Doors Centre or anywhere else.

17B Halley Road, BALCATTa WA 6021  
**P** 9225 0400  
**F** 9240 7410  
Mon – Fri 9.00am – 5.00pm  
[missionaustralia.com.au](http://missionaustralia.com.au)

## ORS CABIS (CHILD AND ADOLESCENT BRIEF INTERVENTION SERVICE)

CABIS provides free assessments, evidence based-brief interventions and short-term counselling services for young people aged 4 to 15 years experiencing mild to moderate mental health concerns. CABIS is provided by ORS Psychology and is a WA Primary Health Alliance initiative designed to integrate mental health services and improve the experience of people needing help. GP referral only and must be the child of a financially disadvantaged parent/guardian.

2-3/647 Wellington Street, PERTH WA 6000  
**P** 1800 000 323  
Mon – Fri 8.30pm – 5.00pm



## PALMERSTON CENTRE AND FARM

Provides counselling, training, treatment, supervision, support and education for those dealing with issues in the area of alcohol and other drugs. Works with Community Drug service teams. Palmerston farm is a residential Treatment Facility.

134 Palmerston Street, PERTH WA 6000  
**P** 9328 7355  
**F** 9227 9158  
**E** [perth@palmerston.org.au](mailto:perth@palmerston.org.au)  
Mon, Thurs and Fri 9.00am – 4.30pm, Tues and Wed 9.00am – 8.00pm  
[palmerston.org.au](http://palmerston.org.au)

### South East Metro Community Drug Service

312 Spencer Road, THORNLIe 6108  
**P** 9267 2400  
**F** 9452 8681  
**E** [thornlie@palmerston.org.au](mailto:thornlie@palmerston.org.au)  
Mon – Fri 8.30am to 12.00pm and 1.00pm – 4.30pm

### South Metro Community Drug Service

L3/22 Queen Street, FREMANTLE WA 6160  
**P** 9430 5966  
**F** 9335 3071  
**E** [fremantle@palmerston.org.au](mailto:fremantle@palmerston.org.au)  
Mon, Tues, Thurs, Fri 8.00am – 4.30pm, Wed 8.30am – 8.00pm

### South Metro Community Drug Service

22 Tuckey Street, MANDURAH WA 6210  
**P** 9581 4010  
**F** 9582 7062  
**E** [mandurah@palmerston.org.au](mailto:mandurah@palmerston.org.au)  
Mon – Fri 8.30am – 5.00pm

### South Metro Community Drug Service

U2/31 Council Avenue, ROCKINGHAM  
**P** 9550 9200  
**F** 9529 1511  
**E** [rockingham@palmerston.org.au](mailto:rockingham@palmerston.org.au)  
Mon – Fri 8.30am – 12.00pm, 1.00pm – 5.00pm

### Great Southern Community Drug Service

3/90 Frederick Street, ALBANY WA 6330  
**P** 9842 8008  
**F** 9842 8719  
**E** [albany@palmerston.org.au](mailto:albany@palmerston.org.au)  
Mon, Tue, Thurs, Fri 8.30am – 5.00pm, Wed 8.30am – 7.00pm

7/39 Strickland Street, DENMARK WA

**P** 9848 1491

**F** 9848 1493

**E** albanypalmerston.org.au

19 Daping Street, KATANNING WA

**P** 9821 8306

**E** katanningpalmerston.org.au

Mon – Fri 8.30am – 4.30pm

## PARENT DRUG INFORMATION SERVICE (PDIS)

PDIS is a confidential, non-judgmental, 24 hour/7 days a week helpline for families and carers seeking help for alcohol or other drug use. This service provides counselling, referrals, information, support groups as well as Parent to Parent and Drug Court support.

**P** 9442 5050 or 1800 653 203 (toll free)

**F** 9442 5020

**E** pdis@health.wa.gov.au

**DRUG AND ALCOHOL OFFICE – OPDIS 24 hours**

Mon – Fri 8.00am – 10.00pm (Peer support)

**dao.health.wa.gov.au**

## PARENTS AND FRIENDS OF LESBIANS AND GAYS (PFLAG)

Offers a support system for family and friends of lesbian, gay, bisexual and transgender people in their effort to understand, accept and support them with love and pride. Services include printed materials, information services, library resources, support, group meetings and a newsletter. Open meetings are held on the second Saturday of each month.

**P** 0404 594 699 (24 hour help line)

**E** info@pflagwa.org.au

**pflagaustralia.org.au** or **pflagwa.org.au**

## PARKERVILLE CHILDREN AND YOUTH CARE INC.

Provides care and protection to children and youth in need aged 1 to 20 years. This ranges from providing accommodation, a loving family environment, education and employment training and therapeutic care. Parkerville Children and Youth care have a number of locations in the metropolitan area.

Beacon Road, PARKERVILLE WA 6081

**P** 9295 4400

**F** 9295 4099

**E** admin@parkerville.org.au

Mon – Fri 9.00am – 5.00pm

**Facebook.com/PARKERVILLE.CYC**

**parkerville.org.au**

**George Jones Child Advocacy Centre**

2 Wungong Road, ARMADALE WA 6112

**P** 9391 1900

**F** 9391 1950

**E** admin\_armadale@parkerville.org.au

**Armadale Therapeutic Family Services**

2 Wungong Road, ARMADALE WA 6112

**P** 9391 1900

**F** 9391 1950

**E** tfs@eftel.net.au

**Mirraboopa Therapeutic Family Services**

8 Cobbler Place, MIRRABOOKA WA 6941

**P** 9349 9180

**F** 9440 5768

**E** bmunro@parkerville.org.au

**Midland Cale House**

Cale House, 52 The Crescent MIDLAND WA 6056

**P** 9349 9180

**F** 9440 5768

**E** bmunro@parkerville.org.au

**Swan View Youth Centre**

116 Salisbury Road, SWAN VIEW WA 6056

**P** 9255 2570

**E** seenandheard@parkerville.org.au

11 Wellington Street, NORTHAM WA 6401

**P** 9622 8371

**F** 9622 1269

**E** strigwell@parkerville.org.au

## PASSAGES RESOURCE CENTRE

Support for homeless and street-present young people. Providing information, referrals and support, showers, kitchen, laundry, computers, a phone and recreation in a safe and friendly environment.

22 Palmerston Street, NORTHBRIDGE WA 6003  
**P** 9228 1478  
**E** [passages.project@svdpwa.org.au](mailto:passages.project@svdpwa.org.au)  
 Mon – Thurs 9.00am – 4.00pm, Fri 9.00am – 1.00pm  
**passagesresourcecentre.com**

## PILBARA MENTAL HEALTH AND DRUG SERVICE

The Pilbara Mental Health and Drug Service (PMHDS) provides assessment, counselling, referral and support to people who are experiencing problems as a result of alcohol or drug use or mental health. Ongoing treatment is voluntary and there is no legislative mandate for people unwilling to engage to be coerced to do so.

Cnr Colebatch Way & Rason Court, SOUTH HEDLAND  
**P** 9174 1256  
**health.wa.gov.au/services/detail.cfm?Unit\_ID=2557**  
 Mon – Fri 8.30pm – 4.30pm

## PEEL YOUTH MEDICAL SERVICE (PYMS)

Provides a youth friendly health service that is free and non-judgmental.  
 Billy Dower Youth Centre, Dower Street, MANDURAH WA 6210  
**P** 9583 5435  
**F** 9583 5863  
**E** [office@peelyouthmedicalservice.com.au](mailto:office@peelyouthmedicalservice.com.au)  
 Mon – Thurs 9.00am – 5.00pm  
**peelyouthmedicalservice.com.au**

## PEEL YOUTH SERVICES INC

Provides family support officers, youth workers/mentors, young parent specialised workshops, young parent alternative education program, UTurn (male specific interactive hands on programs) Choyces (female specific early intervention programs). Also Early Childhood support centre and life skills based young women's program. Early intervention to reduce family breakdown, homelessness, child abuse, domestic violence, alcohol misuse, anti-social behaviours, violence, poor mental health and low sense of self.

Lot 41, 432 Lakes Road East, MANDURAH WA 6210  
**P** 9581 3365  
**F** 9582 7365  
**E** [admin@pys.org.au](mailto:admin@pys.org.au)  
 Mon – Fri 9.00am – 4.00pm  
**pys.org.au**

## PEER BASED HARM REDUCTION WA

Peer Based Harm Reduction WA is the only peer based, not for profit, community-based harm reduction organisation that represents the needs and concerns of people who use or have used drugs in WA. Peer Based Harm Reduction WA's vision is an inclusive society where all voices are heard, people are treated with dignity and have equitable opportunities regardless of their choice to use drugs.

Suite 21-22, 7 Aberdeen Street, Perth WA 6000  
**P** 9325 8387  
**F** 9325 6152  
**E** [info@harmreductionwa.org](mailto:info@harmreductionwa.org)  
 Mon – Wed & Fri 10.00am – 5.00pm, Thurs 10.00am – 8.00pm, Sat – Sun 1.00pm – 4.00pm  
**harmreductionwa.org**

**Bunbury**  
 97 Spencer Street, BUNBURY WA 6230  
**P** 9791 6699  
 Mon – Fri 10.00am – 2.00pm

## PERTH CHILDREN'S HOSPITAL

Western Australia's specialist paediatric hospital and trauma centre, providing medical care to children and adolescents up to 16 years of age.

15 Hospital Avenue, NEDLANDS WA 6009  
**P** 6456 2222  
**pch.health.wa.gov.au**

## PERTH INNER CITY YOUTH SERVICE (PICYS)

PICYS offers medium to long term supported accommodation and youth consultancy. They are experienced in supporting clients who have issues around sexuality, alcohol and other drug use.

22, Blencove Street, LEEDERVILLE WA 6007  
**P** 9388 2791  
**F** 9388 2793  
**picys.org.au**  
**E** info@picys.org.au  
 Mon – Fri 9am – 5pm  
 Mon – Fri 10.00am – 4.00pm, closed Tues after 11.30am (contact hours)

## PHOENIX ADVOCACY AND SUPPORT SERVICE

Phoenix Advocacy and Support Service provides counselling and support to survivors of child sexual abuse.

404 Walcott Street, COOLBINIA WA 6050  
**P** 9443 1910  
**F** 9227 1510  
**E** info@phoenix.asn.au  
**phoenix.asn.au**

## POISONS INFORMATION CENTRE

Provides information on dosages, side effects and medical recommendations by phone.

Sir Charles Gardner Hospital, NEDLANDS WA 6009  
**P** 13 11 26 (24 hour hot line)  
**scgh.health.wa.gov.au**

## PORTS

Expert assessments and treatment for residents of WA aged 16+ who have symptoms of anxiety, depression, or substance use problems.

2-3, 647 Wellington Street, PERTH WA 6000  
**P** 1800 000 323  
 Mon – Fri 8.30 to 5.00pm

## PREGNANCY ASSISTANCE

Pregnancy Assistance provides compassionate care and emotional, practical and informative support to anyone impacted by pregnancy or pregnancy loss. This includes pregnancy testing, pregnancy care consultation, professional counselling (including post abortion grief counselling), accommodation referral, advocacy and support services referral. All our services are free and confidential.

195 Lord Street, EAST PERTH, WA  
**P** 9328 2926  
**E** info@pregnancyassistance.org.au  
 Mon – Fri 10.00am – 3.00pm (visiting hours), Mon – Fri: 9.00am – 4.00pm (telephone hours)  
**pregnancyassistance.org.au**

## PREGNANCY PROBLEM HOUSE

Free crisis intervention and long term care for unsupported or unintended pregnancies pre and/or post termination, pregnancy loss and relationship counselling, at-risk parent mentoring and education, material assistance. Residency/proof of income not required. Face to face appointments available in Perth, Albany and Geraldton.

342 Wanneroo Road, NOLLAMARA WA 6061  
**P** 9344 8110 or 1300 200 406  
**E** info@pregnancyproblemhouse.com  
 Mon – Fri 9.00am – 5.00pm or by appointment  
**pregnancyproblemhouse.com.au**



# Q

## QUIT NOW

This website is part of the Australian Government's continuing efforts to reduce the level of tobacco use among Australians and is aimed directly at smokers, both youth and adults. It's designed to provide information and further resources on successfully quitting, as well as further information on the Australian Government's Tobacco campaigns. This website also provides a copy of the Smoking Cessation Guidelines for Australian General Practice.

**P** 137 848 (Quitline)  
**E** quitnow@health.gov.au  
**quitnow.gov.au**

# R

## RELATIONSHIPS AUSTRALIA

Counselling in a variety of mediums, including: domestic violence groups, families, couples, pregnancy, victims and perpetrators of abuse. Other services include: mediation, child contact and education.

**relationshipsaustralia.org.au**

### METRO

#### Head Office

15 Cambridge Street, WEST LEEDERVILLE WA 6007  
**P** 9489 6300 or 1300 364 277 (toll free - call for opening hours)  
**F** 6164 0400

#### Fremantle

1 Ord Street, FREMANTLE WA 6160  
**P** 6164 0420  
**F** 9432 5099

#### Gosnells

Lotteries House, 2232C Albany Highway, GOSNELLS WA 6110  
**P** 6164 0460  
**F** 9394 9099

#### Joondalup

Lotteries House, Corner Boas Drive and Davidson Terrace, JOONDALUP WA 6027  
**P** 6164 0440  
**F** 9301 2842

#### Mandurah

7 Anzac Place, MANDURAH WA 6210  
**P** 6164 0570  
**F** 9583 6099

#### Mandurah - Education And Program Services

21 George Street, MANDURAH WA 6210  
**P** 6164 0200  
**F** 9583 6098

#### Kwinana

2 Robbos Place, KWINANA WA 6167  
**P** 6164 0500  
**F** 6210 1700

#### Midland

27 The Crescent, MIDLAND WA 6056  
**P** 6164 0480  
**F** 9274 3644

## REGIONAL

**Albany**

118 Serpentine Road, ALBANY WA 6330

**P** 6164 0530

**F** 8945 7799

**Bunbury**

20 Molloy Street, BUNBURY WA 6230

**P** 6164 0550

**F** 9792 1122

**Northam**

91-93 Wellington Street, NORTHAM WA 6401

**P** 6164 0480 (same as midland)

**F** 9621 2155

**South Hedland**

Lotteries House, Unit 8/2 Leake Street, SOUTH HEDLAND WA 6722

**P** 9160 2900

**F** 9160 2999

## FAMILY RELATIONSHIP CENTRES

Level 1, Sheffield House, 713 Hay Street, PERTH WA 6000

**P** 6164 0300

**F** 9278 4099

Outreaches of the Bunbury Family Relationship Centre at Albany, Busselton, Manjimup and Margaret River.

1/82 Blair Street, Bunbury WA 6230

**P** 6164 0680

**F** 6210 5905

## RICHMOND WELLBEING

Works with those affected by mental illness, offering services in accommodation, rehabilitation and support. Respite service for adults and young people.

29 Manning Road, CANNINGTON WA, 6107

**P** 1800 742 466

**F** 9258 3090

**E** admin@rfwa.org.au

Mon – Fri 8.00am – 5.00pm

**rw.org.au**

## RISE COMMUNITY SUPPORT NETWORK

The service provides accessible, non-judgmental support services to homeless and at risk young men and women in the hills area. Services include advocacy, referral, emotional support, welfare assistance and information.

41A Great Northern Highway, MIDDLES SWAN WA 6056

**P** 6274 3700

**E** contact@risenetwork.com.au

## ROEBOURNE PCYC

Roebourne PCYC is a safe place for everyone. The centre's main goal is to provide an environment to keep young members of the community safe. A place where youth can leave everything at the door come in, have a feed and have some fun.

1 Sholl St, ROEBOURNE WA 6718

**P** 0477 029 377

## ROYAL PERTH HOSPITAL

RPH is a 450-bed hospital, continuing to provide an extensive range of services including: complex and elective surgery, highly specialised surgical services tertiary mental health, specialist medical services and a range of same-day clinical support services.

Wellington Street, PERTH WA 6000

**P** 9224 2244

**F** 9224 3511

**rph.wa.gov.au**

## SALVATION ARMY – CROSSROADS WEST YOUTH ACCOMMODATION SERVICE

Provides safe, secure and affordable accommodation for young people 15 to 25 who are homeless or at risk of becoming homeless.

7 Goodwin Close, KARRATHA WA 6714

**P** 9144 1881

**F** 9183 8648

**E** [tss@aus.salvationarmy.org](mailto:tss@aus.salvationarmy.org)

24 hours

## SAMARITANS YOUTH OFFICE

24 hour support for young people who are feeling depressed, lonely and suicidal. The Youth Office handles requests for information, publications and presentations.

60 Bagot Road, SUBIACO WA 6008

**P** Admin 9381 5725 or 135 247 (Crisis Line – 24 hours)

**E** [support@thesamaritans.org.au](mailto:support@thesamaritans.org.au) or [admin@samaritanscrisisline.org.au](mailto:admin@samaritanscrisisline.org.au)

Mon – Fri 9.00am – 4.30pm (office)

**thesamaritans.org.au**

## SEXUAL ASSAULT RESOURCE CENTRE (SARC)

24 Hour medical, forensic and counselling service to males and females aged 13 and older who have experienced a recent sexual assault. Counselling and support is available to those who have experienced sexual assault in the past and their families.

**P** 9340 1820 (Administration), 9340 1828 (Crisis), 1800 199 888 (Crisis Line – 24 hours)

8.30am – 5.00pm

**kemh.health.gov.au/services/sarc/index.htm**

## SEXUAL HEALTH HELPLINE

Contraception options, emergency contraception, fertility issues, immunisation, HIV/AIDS, menopause, men's sexual health, planning a pregnancy, post natal depression, sexual difficulties, sexual health checks and screenings, safe sex information, sexually transmissible infections (STIs), relationships and sexuality, unplanned pregnancy, including the law in WA on the issues regarding termination.

**shq.org.au**

### METRO

**P** 9227 6178

Mon – Fri 10.00am – 4.00pm

### COUNTRY

**P** 1800 198 205 (toll free country callers)

Tue 8.30am – 5.00pm, Wed – Fri 8.30am – 4.00pm

## SEXUAL HEALTH QUARTERS (SHQ)

**(Formerly FPWA Sexual Health Services)**

Sexual health services, including contraception, STI testing and treatment, pregnancy testing and information.

70 Roe Street, NORTHBRIDGE WA 6003

**P** 9227 6177

**F** 9227 6871

**E** [info@shq.org.au](mailto:info@shq.org.au)

Mon – Wed 9.30am – 4.00pm, Thurs 9.30am – 8.00pm, Fri 9.30am – 12.00pm

**shq.org.au**

### SHQ Health Helpline

**P** 9227 6178 or 1800 198 205 (country)

**E** [sexhelp@shq.org.au](mailto:sexhelp@shq.org.au)

### SHQ Counselling

**P** 9228 3693

**F** 9227 6871

**E** [counselling@shq.org.au](mailto:counselling@shq.org.au)

## SHARE AND CARE

A not for profit organization that sponsors health, welfare and children's services throughout the communities in regional Western Australia.

88 Wellington Street, NORTHAM WA 6401

**P** 9622 2828

**E** [admin@shareandcare.com.au](mailto:admin@shareandcare.com.au)

Mon – Fri 9.00am – 4.00pm

**shareandcare.com.au**

## SHENTON CHILD AND ADOLESCENT CENTRE

Shenton Child and Adolescent Mental Health Service works with children and young people (up to the age of 18) and their families, who are experiencing severe mental health issues. They aim to assess and provide assistance where possible. Services are provided by members of a multidisciplinary team consisting of community mental health nurses, social workers, clinical psychologists and a Consultant Child and Adolescent Psychiatrist. Issues they can help with include: severe depression, self-harm, suicidal thoughts or behavior, severe anxiety, psychotic phenomena (delusions, hallucinations, hearing voices), severe obsessions and compulsions, complex and severe emotional and psychological reaction to traumatic events, eating disorder including anorexia and bulimia.

227 Stubbs Terrace, SHENTON PARK WA 6008

**P** 9381 7055

**F** 9381 6044

Mon – Fri 9.00am – 5.00pm

### Complex Attention and Hyperactivity Disorders Services

4th floor, 111D Building, Discovery Way, Murdoch University, MURDOCH WA 6150

**P** 9360 1650

### Clarkson Child and Adolescent Centre

77 Renshaw Boulevard, CLARKSON WA 6030

**P** 9304 6200

### Hillarys Child and Adolescent Centre

Unit 2/3, 32 Endeavour Road, HILLARYS WA 6025

**P** 9403 1999

### Kalamunda Child and Adolescent Centre

1 Warbler Court, HIGH WYCOMBE WA 6057

**P** 9454 2698

### Midland/Swan Valley Child and Adolescent Centre

14 Sayer Street, MIDLAND WA 6056

**P** 9250 5777

### Mirrabooka Child and Adolescent Centre

Unit 1, 22 Chesterfield Road, MIRRABOOKA WA 6061

**P** 9345 7100

### Northbridge Youthlink

223 James Street, NORTHBRIDGE WA 6003

**P** 9227 4300

### Warwick and Andrew Relph Child and Adolescent Centres

316 Erindale Road, WARWICK WA 6024

**P** 9448 5544

## SHIRE OF EAST PILBARA ( YACWA)

The Shire of East Pilbara is not just about resources - it's also about resourcefulness. From our Indigenous people to early pastoralists and miners, and through to the present day, people have shown their capacity to not only survive but thrive in the heart of the Pilbara.

**P** 9175 1963

**E** [cys@eastpilbara.wa.gov.au](mailto:cys@eastpilbara.wa.gov.au)

Mon 2.20pm – 6.30pm

**eastpilbara.wa.gov.au**

## SHIRE OF MANJIMUP

The Shire has a Youth Development Officer and also financially assists several other part time youth workers who provide support to young people aged 11 to 18 years in the Shire.

37-39 Rose Street, MANJIMUP WA 6258

**P** 9771 7777

**F** 9771 7771

**E** [info@manjimup.wa.gov.au](mailto:info@manjimup.wa.gov.au)

Mon – Fri 8.30am – 5.00pm

**manjimup.wa.gov.au**

## SHIRE OF MUNDARING – PARENT AND ADOLESCENT COUNSELLING SERVICES

Provides adolescents and parents of children aged 12 to 18 years with the skills to cope with life and relationships. Services include information and education, literature and counselling.

Swan View Youth Centre, Salisbury Road, SWAN VIEW WA 6056

**P** 9255 1736

**F** 9250 5320

**mundaring.wa.gov.au**

Sir Charles Gairdner Hospital, NEDLANDS WA 6009

**P** 9346 3333

**scgh.health.wa.gov.au**

## THE SMITH FAMILY

The Smith Family is a national, independent children's charity helping disadvantaged Australians to get the most out of their education, so they can create better futures for themselves.

16/14 Victoria Avenue, Perth WA 6000

**P** 0435 800 821

Mon – Fri 9.00 – 5.00pm

## SOUTH WEST 24

Provides support and counselling for young people with issues relating to mental health, depression, suicide and drug and alcohol. It is a confidential free call service for young people in the south west. Assistance with referral is also provided. Health professionals, community and other service providers can access 24 hour telephone support, information and advice and can leave standing orders.

**P** 1800 555 336 (24 hours)

## SPORTS CHALLENGE AUSTRALIA

An experiential mentoring program using sports to encourage children and adolescents to use more of their full potential in all areas of their lives. Sessions are designed to improve preparation for life skills. There are 55 locations around Australia, most capital cities, rural and remote locations.

1/26 Hardy Street, SOUTH PERTH WA 6151

**P** 6254 8133

**F** 6254 8122

**E** [info@sportschallenge.com.au](mailto:info@sportschallenge.com.au)

Mon – Fri 8.00am – 5.00pm

**sportschallenge.com.au**

## ST JOHN OF GOD: SOCIAL OUTREACH AND ADVOCACY SERVICE

Provides social outreach and advocacy services which reach out to people experiencing disadvantage to improve health and wellbeing. Horizon House provides accommodation, care and intensive support to young people aged 16 to 22 who need a safe and stable place to call home. Young people who live in Horizon House have a variety of different backgrounds but are vulnerable, homeless or at risk of being homeless. Horizon houses are located in Broome, Bunbury, Dianella, Geraldton, Wanneroo and Wilson. (Please contact for specific details).

10/454 Scarborough Beach Road, OSBORNE PARK WA 6017

**P** 6103 5654

**F** 9443 3456

**[sjog.org.au/outreach](http://sjog.org.au/outreach)**

## ST JOHN OF GOD – MIDLAND PUBLIC HOSPITAL

Provides community and youth services to people who are experiencing disadvantage to improve their health and wellbeing. Programs include medium and long term accommodation options, Aboriginal health services, Aboriginal perinatal services, support for dads and support for mums and families are available at no or low cost.

1 Clayton Street, MIDLAND WA 6056

**P** 9462 4000

**F** 9462 4050

**E** [info.midland@sjog.org.au](mailto:info.midland@sjog.org.au)

**[sjog.org.au](http://sjog.org.au)**



## ST VINCENT DE PAUL SOCIETY

Teen and kids camps and homework centre in Belmont for disadvantaged youth aged 8 to 16 years.

9 Brewer Road, CANNING VALE WA, 6155  
**P** 6323 7500  
**E** info@svdpwa.org.au  
 Mon – Fri 8.30am – 4.30pm  
**vinnies.org.au**

## STREET CONNECT PROGRAM

Youth workers assertively engage street-present and/or homeless young people in the inner city. The Outreach bus provides information, advocacy, referral support and crisis intervention. The bus carries water, fresh sandwiches, safe sex paraphernalia and first aid as well as IT and mobile phone access.

23 Adelaide Terrace, EAST PERTH WA 6004  
**P** Anglicare 9263 2000  
**F** 9325 8969  
**E** info@anglicarewa.org.au  
 Mon – Fri 11.00pm – 3.00pm  
 Street sessions – Mon – Fri 5.00pm – 9.00pm  
**anglicarewa.org.au**

## STREET DOCTOR

Provides visible, accessible and non-judgmental mobile medical and related services to street present populations in the central Perth and Midland areas. Also provides information, counselling, vaccinations, harm reduction interventions and suturing among other services. Call phone number for location information on the mobile service.

48A James Street, GUILDFORD WA 6055  
**P** 9376 9200  
**F** 9279 8221

## SUBIACO COMMUNITY MENTAL HEALTH – AVRO HOUSE

Outpatient Psychiatric Clinic for 18 to 60 year olds. General Practitioners to make contact on behalf of patients.

2 Nicholson Road, SHENTON PARK WA 6009  
**P** 9489 7200 or 9224 1770 (central)  
**F** 9382 4171  
**E** greg.munro@health.wa.gov.au  
 Mon – Fri 8.30am – 5.00pm  
**health.wa.gov.au**

## SUBSTANCE

Substance provides services for young people aged 12 to 25 years in Bunbury, Busselton, Margaret River and Dunsborough. Provides especially designed services for youth who have become disconnected from their family, school and community and are experiencing issues related to homelessness. A preventative role is taken through community education and training and treatment with one-to-one, family or group counselling.

26, Forrest Avenue, SOUTH BUNBURY WA 6230  
**P** 9729 9000  
**F** 9791 1522  
**E** Info@accordwest.com.au  
 Mon – Fri 9.00am – 5.00pm  
**accordwest.com.au**

## SWAN CITY YOUTH SERVICE

Outreach Polytechnic West program, substance abuse project, Outreach project, recreational activities, graffiti art, and drop-in facilities. Aged 12 to 25 years.

12 Padbury Terrace, MIDLAND WA 6056  
**P** 9274 3488  
**F** 9274 2704  
**E** ray@scys.com.au  
 Mon – Fri 10.00am – 7.00pm  
**scys.com.au**

# T

## TEEN CHALLENGE

A Christian based organisation providing residential rehabilitation for drug, alcohol or life control problems. Aged 16 years and older. "Solutions" presentation for parents/friends of people with drug/alcohol/life control problems held monthly at the Perth teaching facility. Grace Fellowship – support before and after rehabilitation.

81 Ellersdale Avenue, WARWICK WA 6024

**P** 9246 5777

**F** 9246 5377

**E** tcpadmin@inet.net.au

Mon – Fri 9.00am – 4.30pm

**teenchallengewa.org.au**

## TINOCA CRISIS HOSTEL

Emergency accommodation specifically for 15 to 19 year olds. Offers case management and support, referrals and assists in finding longer term accommodation, organised by the Joondalup Youth Futures.

Joondalup Lotteries House, Suite 1/70 Davidson Terrace, JOONDALUP WA 6027

**P** 9300 1565 or 9307 4520

**F** 9307 2263

**E** helen@youthfutureswa.org.au

Mon – Sun 4.30pm – 8.30pm (hostel)

**youthfutureswa.org.au**

## TOM PRICE YOUTH CENTRE

The Tom Price Youth Support Association otherwise known as the Tom Price Youth Centre and is a not for profit organisation that not only offers support to the youths of Tom Price, Paraburdoo and surrounding communities, but to 'ALL' community members.

Stadium Rd, TOM PRICE WA 6751

**P** (08) 9189 2340

**E** youth@tpysa.org.au

Mon 9.00am – 1.00pm

# T

## TRANSLATING AND INTERPRETING SERVICE (TIS)

Telephone service – Communication assistance for those whose primary language is not English.

**P** 13 14 50

**tisnational.gov.au**

# U & V

## UNITING CARE WEST

UnitingCare West is committed to achieving justice, hope and opportunity for all, and works to support and empower in particular those most in need in the WA community. It is a not-for-profit community services organisation and part of the mission of the Uniting Church in Australia and UnitingCare national network. Uniting Care West is a service offering regional support for young people.

16 Sunbury Road, VICTORIA PARK WA 6100  
P 1300 663 298  
E [admin@unitingcarewest.org.au](mailto:admin@unitingcarewest.org.au)  
[unitingcarewest.org.au](http://unitingcarewest.org.au)

## VISABILITY

Professional therapy and support services for children and youth across a range of ages and disabilities. They are available to children from birth to 18-years-old at home, school and in the community. Professional therapists includes: Occupational therapists, Physiotherapists, Speech pathologists, Psychologists, Social workers, Orientation and mobility specialists and Orthoptists.

61 Kitchener Avenue, VICTORIA PARK WA 6100  
P 9311 8202 or 1800 847 466 (toll free)  
F 9361 8696  
E [info@visability.com.au](mailto:info@visability.com.au)  
Mon – Fri 8.30am – 5.00pm  
[visability.com.au](http://visability.com.au)

# W

## WA AIDS COUNCIL (WAAC)

WAAC provides a wide range of services in the prevention of HIV, and the treatment and care of people living with HIV/AIDS.

664 Murray Street, WEST PERTH WA 6005  
P 9482 0000 (AIDSline), 9482 0044, 9322 8401 (Mensline) or 1800 671 130 (toll free country callers)  
E [waac@waaid.com](mailto:waac@waaid.com)  
[waaid.com](http://waaid.com)

## WA ASSOCIATION FOR MENTAL HEALTH

WAAMH is the peak mental health representative body in Western Australia for non-government not-for-profit agencies.

1 Nash Street PERTH, WA  
P 6246 3000  
F 9420 7280  
E [reception@waamh.org.au](mailto:reception@waamh.org.au)  
Mon – Fri 8.30am – 4.30pm

## WA COMMUNITY LEGAL CENTRES (WACLC)

Services provided include legal information, advice and representation to individuals and groups, community education and law reform activities and advice to governments on policy issues. Most services are free or very low cost.

[legalaids.wa.gov.au](http://legalaids.wa.gov.au)

## SPECIALISED SERVICES

**Case For Refugees**  
P 9227 7311  
[caseforrefugees.org.au](http://caseforrefugees.org.au)

**Mental Health Law Centre**  
P 9328 8012  
Mon – Fri 9.00am – 4.00pm

**Women's Law Centre**  
P 9272 8800

## METRO

**Communicare Armadale Information And Referral Service (Inc)**

Provides financial services for people over 18 years of age. Emergency relief services available for those under 18 years.

36-40 Commerce Avenue, ARMADALE WA 6112

P 9399 7977

**Fremantle Community Legal Centre**

35 William St, FREMANTLE WA 6160

P 9432 9790

**Gosnells Community Legal Centre Inc**

a: Suite 1, 2232c Albany Highway, GOSNELLS WA 6110

P 9398 1455

F 9490 1265

E admin@goscllc.com.au

Tues – Fri 9.30am – 12.30pm, 1.30pm – 3.30pm

goscllc.com.au

**Midland Information, Debt And Legal Advice Service Inc (Midlas)**

23 Old Great northern Highway, MIDLAND WA

P 9250 2123

F 9274 4115

E admin@midlas.org.au

Mon – Fr 9.00am – 4.30pm

midlas.org.au

**Northern Suburbs Community Legal Centre**

10 Cobbler Place, MIRRABOOKA WA 6061

P 9440 1663

F 9440 1669

E mirrabooka@nsclegal.org.au

Mon – Fri 9.00am – 4.30pm

**Southern Communities Advocacy Legal And Education Services Inc (Scales)**

St Nicholas Community Centre, Suite 3/14 Council Avenue, ROCKINGHAM WA 6168

P 9550 0400

F 9527 4802

E scales@murdoch.edu.au

goto.murdoch.edu.au/scales

**Sussex Street Community Law Service Inc**

29 Sussex Street, EAST VICTORIA PARK WA 6101 p: 6253 9500

F 9470 1805

E sscls@sscls.asn.au

Mon – Fri 9.30am – 4.30pm (office)

sscls.asn.au

## WOMEN'S LAW CENTRE OF WA

Ground Floor, 445 Hay Street, PERTH WA 6000

P 1800 625 122

wlcwa.org.au

## REGIONAL

**Albany Community Legal Centre Inc.**

125 Grey Street West, Albany, WA

P 1800 606 060

F 9842 8577

E reception@albanyclc.com.au

Mon – Thur 8.30am – 3.30pm, Fri 8.30am – 12.00pm

albanyclc.com.au

**Bunbury Community Legal Centre**

Half hour appointments for preliminary legal advice, call for an appointment.

1st Floor, 101 Victoria Street, BUNBURY WA 6230

P 9791 3206

F 9791 8162

E info@swlc.org.au

Mon – Fri 9.00am – 4.00pm

bunburyclc.com.au

**Regional Alliance West**

Lotteries House, 114 Sanford Street, GERALDTON WA 6530

P 9938 0600

F 9964 3439

E chris@raw.org.au

Mon – Thurs 8.30am – 4.30pm

grc.asn.au

**Goldfields Community Legal Centre**

23 Mariena Street, KALGOORLIE WA 6430

P 9021 1888

F 9021 1877

E admin@gclc.com.au

Mon – Fri 9.00am – 4.00pm

**Kimberley Community Legal Centre Inc**

4 Papuana Street, KUNUNURRA WA 6743

P 9169 3100

F 9169 3200

E office@kcls.org.au

Mon – Fri 8.00am – 12.30pm, 1.30pm – 4.00pm

**Marninwarntikura Fitzroy Women's Resource Centre**

Lot 284 Balannjangarri Road, FITZROY CROSSING WA 6765

**P** 9191 5284

**F** 9191 5611

**mwrc.com.au**

**Peel Community Legal Service Inc**

Suite 15, Charlotte Lodge, 2 Sutton Street, MANDURAH WA 6210

**P** 9581 4511

**F** 9581 5211

**E** office@peelcls.com.au

Mon – Tues 9.00am – 4.30pm, Thurs – Fri 9.00am – 4.30pm (Closed Wed)

**peelcls.com.au**

**Pilbara Community Legal Service**

Lotteries House, South Hedland Office, Unit 9/2 Leake Street, SOUTH HEDLAND WA 6722

**P** 9140 1613

**F** 9172 2333

**E** admin@pcls.net.au

Mon – Fri 8.00am – 4.00pm

**pcls.net.au**

## WA NETWORK OF ALCOHOL AND OTHER DRUG AGENCIES (WANADA)

A peak body for the alcohol and other drug (AOD) education, prevention, treatment and support sector in Western Australia. Has an AOD directory available on the website.

Level 1, Nast Street, PERTH WA 6000

**P** 6557 9400

**F** 9328 1682

**E** drugpeak@wanada.org.au

Mon – Fri 9.00am – 5.00pm

**wanada.org.au**

## WA POLICE – CHILD ASSESSMENT AND INTERVIEW TEAM

Level 2/79 Stirling Street, PERTH WA 6000

**P** 9428 1666

**F** 9428 1644

**E** cait@police.wa.gov.au

Mon – Fri 8.00am – 4.00pm

## WARATAH SUPPORT CENTRE

Provides a 24 hour rape crisis interventions and counselling service. Other services include free counselling in the areas of sexual abuse for teens and adults aged 13 and over, domestic violence for women aged 16 and over, children's domestic violence for children aged 5 to 15 years, children's sexual abuse/assault for children aged 5 to 12 years. Visit website for full range of services.

**P** 9791 2884 or 1800 017 303 (toll free)

**F** 9721 3102

**E** waratah@waratah.asn.au

Mon – Fri: 9.00am – 5.00pm

**waratah.asn.au**

## WARWICK CHILD AND ADOLESCENT CENTRE

Aims to assess and test young people with emotional and behavioural difficulties. Offers support and treatment to young people and their families where these difficulties exist.

316 Erindale Road, WARWICK WA 6024

**P** 9448 5544

**F** 9448 3281

Mon – Fri 8.30am – 5.00pm

## WOMEN'S HEALTH SERVICES

Health education, information, clinical and counselling services for women by women. Disability and pram access.

227 Newcastle Street, NORTHBRIDGE WA 6003

**P** 6330 5400

**F** 6330 5499

**E** info@whfs.org.au

Mon, Tues and Thurs 8.30am – 4.30pm, Wed 8.30am-6.00pm and Fri 8.30am – 1.00pm

**whfs.org.au**

**Alcohol and Other Drugs Program** – offers individual counselling education information, referral and support for women experiencing issues with their own or someone else's use of alcohol and other drugs. Workshops run on a variety of issues.

227 Newcastle Street, NORTHBRIDGE WA 6003

**P** 6330 5400 or Toll free: 1800 246 655

**E** info@whfs.org.au

Mon, Tues and Thurs 8.30am – 4.30pm, Wed 8.30am – 6.00pm, Fri 8.30am – 1.00pm

**whfs.org.au**

## WOMEN'S INFORMATION SERVICE (WIS)

Confidential telephone information referral service for women for all issues. Free WIS pocket directories available.

**P** 1800 199 174 (toll free)

**F** 6551 8556

**E** wis@dlgc.wa.gov.au

Mon – Fri: 9.00am – 4.00pm

[communities.wa.gov.au/communities-in-focus/women/Pages/default.aspx](http://communities.wa.gov.au/communities-in-focus/women/Pages/default.aspx)

## WOMEN'S REFUGES

If you are in crisis right now, call the Police immediately on 000. Currently in Western Australia there are 19 Women's Refuges in the metropolitan and 21 in the rural and remote areas.

### FOR FAMILIES/SINGLES

**Byanda** – Domestic Violence, homeless, eligibility assessed case by case

**P** 9328 7284

24 hours, 7 days

**Damara House** – Domestic Violence (first priority), homeless, boys to 18 years

**P** 9304 3832

24 hours, 7 days

[womenscouncil.com.au/womens-refugee](http://womenscouncil.com.au/womens-refugee)

**Kira House** – Domestic Violence, women 14 to 18 years

**P** 6274 3791 or 6274 3684 or 0408 895 613 (24 hours)

24 hours, 7 days

**Koolkuna** – Domestic Violence, boys to 18 years

**P** 9255 2202

**Lucy Saw** – Domestic Violence, boys to 14 years

**P** 9527 6872

24 hours, 7 days

**Mary Smith** – Domestic Violence, 14 to 18 years

**P** 9458 1107

24 hours, 7 days

**Nardine** – Domestic Violence, boys to 17 years

**P** 9470 3628

**Orana House** – Domestic Violence, boys to 17 years

**P** 9370 4544

24 hours, 7 days

**Pat Giles** – Domestic Violence, boys to 18 years

**P** 9300 0340

24 hours, 7 days

**Pat Thomas House** – Domestic Violence, women 18+, children 16+, boys to 18 years

**P** 9535 4775

24 hours, 7 days

**Ruah** – Domestic Violence, boys to 18 years

**P** 9485 3939

**Starick House** – Domestic Violence, boys to 18 years

**P** 9398 5080

**Stirling** – Domestic Violence, boys to 17 years for families

**P** 9205 7375

**Warrawee** – Domestic Violence, boys to 12 years

**P** 9335 7977

24 hours, 7 days

### FOR SINGLES

**Anawin** – Domestic Violence, single Aboriginal women over 17 years

**P** 9328 7562

24 hours, 7 days

**Nunyara** – Domestic Violence, homeless, women over 25 with children (Male under 10)

**P** 9328 7284

24 hours, 7 days for Aboriginal singles

**Wyn Carr** – Domestic Violence, single women 18 years and over

**P** 9430 5756

24 hours, 7 days

**Zonta** – Domestic Violence, single women over 21 years

**P** 9364 8028

24 hours, 7 days



## RURAL AND REMOTE WOMEN'S REFUGES

[womenscouncil.com.au/rural-remote-refugees](http://womenscouncil.com.au/rural-remote-refugees)

Albany Women's Centre	P 9845 6000
Chrysalia House	P 9964 2173 (Geraldton)
Djookanka House	P 9881 6810 (Narrogin)
Esperance Crisis Accommodation	P 9071 4395
Gascoyne Women's Refuge	P 9941 3358 (Carnarvon)
Gawooleng Yawoodeng	P 9169 1049 (Kununurra)
Goldfields Women's Refuge	P 9021 2836
Hedland Women's Refuge	P 9173 1948
Karijini Family Violence Prevention Service	P 9188 1441
Karratha Women's Refuge	P 9185 2807
Manga Tharndu Maya	P 9182 1800 (Roebourne)
Marnja Jarndu	P 9193 6146 (Broome)
Marninwarntikura	P 9191 5126 (Fitzroy)
Marnin Bowa Dumbara	P 9193 2244 (Derby)
Meekatharra FDVS	P 9980 1604
Newman Women's Shelter	P 9175 5100
Ngaringga Ngurra	P 9168 6653 (Halls Creek)
Ngnowar Aerwah Safe House	P 9161 1717 (Wyndham)
Onslow Safe House	P 9184 6481
South West Refuge	P 9791 2894
Waminda House	P 9622 7321 (Northam)

## WUNGENING ABORIGINAL CORPORATION

A holistic, culturally appropriate and confidential service that assists Aboriginal people in dealing with alcohol and other drug misuse. Offers counselling, flower essences, kinesiology along with drug and alcohol education and youth services.

211 Royal Street, EAST PERTH WA 6004  
**P** 9221 1411  
**F** 9221 1585  
 Mon – Thurs 8.30am – 5.00pm, Fri 8.30am – 2.30pm  
[wungening.com.au](http://wungening.com.au)

## YAANDINA FAMILY CENTRE AND YOUTH SERVICES

Yaandina Family Centre seeks to improve the quality of life in the community through care, support and education. Yaandina offers a range of services to serve people of all ages, from the very young to the very old and everyone in between. Through integrity, respect, teamwork and continuous improvement and innovation we focus on the needs of each of our clients to deliver the best possible service and care.

51 Hampton Street, ROEBOURNE WA 6718  
**P** 9182 1172  
**E** [admin@yaandina.org](mailto:admin@yaandina.org)  
 Mon – Fri 9.00am – 5.00pm (school holidays)

## YIRRA YAAKIN NOONGAR THEATRE

Theatre arts activities by people of Aboriginal descent. Works with the Aboriginal community and maintains strong links outside of the metropolitan area. Lifestyle and health theatre tours of regional Western Australia.

Subiaco Arts centre, Hamersly Road, SUBIACO WA 6008  
**P** 9380 3040  
**F** 9202 1885  
**E** [yy@yirrayaakin.com.au](mailto:yy@yirrayaakin.com.au)  
 Mon – Fri 9.00am – 5.00pm  
[yirrayaakin.com.au](http://yirrayaakin.com.au)

## YORGUM ABORIGINAL CORPORATION

Offers counselling to Aboriginal people affected by child sexual abuse and family violence. Also provides family violence counselling, community workshops and training. Their Link-up Program provides family tracing, family and graveside reunion services, back to country events, counselling and support.

176 Wittenoom Street, EAST PERTH WA 6004  
**P** 9218 9477  
**F** 9221 0487  
**E** [reception@yorgum.com.au](mailto:reception@yorgum.com.au)  
 Mon – Fri 8.30am – 5.00pm  
[yorgum.org.au](http://yorgum.org.au)



## YOUNG MEN'S CHRISTIAN ASSOCIATION (YMCA)

YMCA Australia provides services including accommodation, recreation, health and fitness, youth services. The head office provides contact details for YMCA branches.

201 Star Street, WELSHPOOL WA 6106

**P** 9473 8400

**F** 9472 7522

**E** enquiries@ymcawa.org.au

Mon – Fri 9.00am – 5.00pm

**ymca.org.au**

## YOUTH AFFAIRS COUNCIL OF WA INC. (YACWA)

The independent non-government peak body for youth affairs in WA.

196 Oxford Street, LEEDERVILLE WA 6007

**P** 9227 5440 or 1800 670 231 (toll free country callers)

**F** 9328 7446

**E** yacwa@yacwa.org.au

Mon – Fri 9.00am – 5.00pm

**yacwa.org.au**

## YOUTH BEYOND BLUE

Youth beyond blue encourages young people to talk about depression and seek help when it is required. It is an information service, not a health or crisis service.

PO Box 6100, HAWTHORN WEST VIC 3122

**P** 1300 224 636 or 1300 22 4636 (support service)

**F** (03) 9810 6111

**E** bb@beyondblue.org.au

**youthbeyondblue.com**



## YOUTH CARE CHAPLAINCY

Our school chaplains care for the social, emotional, physical, mental and spiritual wellbeing of students, staff and families. We provide a supportive environment for children and young people, irrespective of their faith or cultural backgrounds.

1/103 Catherine Street, MORLEY WA

**P** (08) 9376 5000

Mon – Fri 9.00am – 5.00pm

**youthcare.org.au**

## YOUTH ENGAGEMENT PROGRAM - (YEP)

Young people in the Youth Engagement Program receive a range of counselling, skills workshops and training, and assistance in getting back to school or an alternate education program.

**P** 0457 804 189

**E** enquiries@karratha.wa.gov.au

9.00am – 5.00pm

**karratha.wa.gov.au**

## YOUTH FOCUS

Youth Focus provides a number of services – youth counselling, family counselling, day outings for young people and the mentoring program. Youth Focus counsellors are trained professionals with the experience and training necessary to assist young people in identifying coping strategies to deal with issues associated with suicide, depression and self-harm.

54 Goodwood Parade, BURSWOOD WA 6100

**P** 6266 4333

**F** 6266 4300

**E** reception@youthfocus.com.au

Mon – Fri 9.00am – 5.00pm

**youthfocus.com.au**



## YOUTH INVOLVEMENT COUNCIL (YIC)

Youth Involvement Council (YIC) is the primary youth organisation delivering programs to young people in Hedland and surrounding areas. The various YIC programs target 5-25 year olds who are, more often than not, considering to be at risk, homeless (or at imminent risk of homelessness), disadvantaged or in need of general support.

34 Lawson Street, SOUTH HEDLAND WA 6722

**P** 9140 1272

**E** [admin@yic.com.au](mailto:admin@yic.com.au)

**yic.com.au**

## YOUTH FUTURES WA

A gatekeeper to a variety of programs for young people, including a drug education service, emergency relief, education and training, accommodation services and more.

3/70 Davidson Terrace, JOONDALUP WA 6027

**P** 9300 2677

**F** 9300 1565

**E** [youthfutureswa@youthfutureswa.org.au](mailto:youthfutureswa@youthfutureswa.org.au)

Mon - Fri 8.30am - 4.30pm

**youthfutureswa.org.au**

## YOUTH FRIENDLY DOCTOR

This program links young people with doctors in their area who are specially trained to meet the particular needs of young people. The AMA (WA) Foundation will provide callers with contact details of Youth Friendly Doctors in their local area.

AMA (WA) Foundation, 14 Stirling Highway, NEDLANDS WA 6009

**P** 9273 3000

**F** 9273 3073

**E** [yfd@amawa.com.au](mailto:yfd@amawa.com.au)

Mon - Fri 8.30am - 5.00pm

**[amawa.com.au/public-community-health/in-the-community/ listofyouthfriendlydoctors](http://amawa.com.au/public-community-health/in-the-community/listofyouthfriendlydoctors)**



## YOUTH LEGAL SERVICES

Youth Legal Service is a Community Legal Centre in Western Australia that provides free and confidential legal services to young people aged under 25 years needing legal advice and representation (in Children's Courts). Youth Legal Service also provides financial counselling to those under the age of 25 years.

Suite 6, St Georges Terrace, PERTH WA 6831

**P** 9202 1688 or

Toll free: 1800 199 006

**F** 9202 1699

**E** [yls@youthlegalserviceinc.com.au](mailto:yls@youthlegalserviceinc.com.au)

Mon - Fri 10.00am - 4.00pm

**youthlegalserviceinc.com.au**

## YOUTHLINK

A mental health service offering counselling and psychotherapy to young people aged 13 to 24 who are experiencing mental health problems or serious psychosocial difficulties and are unable or unwilling to access clinic based treatment.

223 James Street, NORTHBRIDGE WA 6003

**P** 1300 362 569 (triage line)

**P** 9227 4300 (office)

**P** 1800 803 356 (toll free - country callers)

**F** 9328 5911

Mon - Fri 12.30pm - 4.30pm (triage line)

Mon - Fri 8.30am - 4.30pm (office)

**youthlink.perthwa.net**

## YOUTH REACH SOUTH

A free and confidential counselling and support service for at-risk and marginalised young people aged 13 to 24 years.

Level 2/25 Wentworth Parade, SUCCESS WA 6164

**P** 9499 4274

**F** 9499 4270

**E** [youthreachsouth@health.wa.gov.au](mailto:youthreachsouth@health.wa.gov.au)

**wanada.org.au**

A program of St. Patrick's Community Support Centre Limited and is an accommodation service for young people who are homeless or at-risk of becoming homeless, aged 15 to 25 years. They offer accommodation to singles, couples, families, sole parents. Accommodation is for a period of 12 months, living independently and is fully supported by youth work staff.

12 Victoria Street, FREMANTLE WA 6160

P 9430 4159

Mon, Tue 7.30am – 3.30pm, Wed 7.30am – 1.00pm, Thurs – Fri 7.30am – 3.30pm

**stpats.com.au**

## YOUTH SAY NO

This website contains helpful information for young people about family and domestic violence, dating violence and how to support an abused friend.

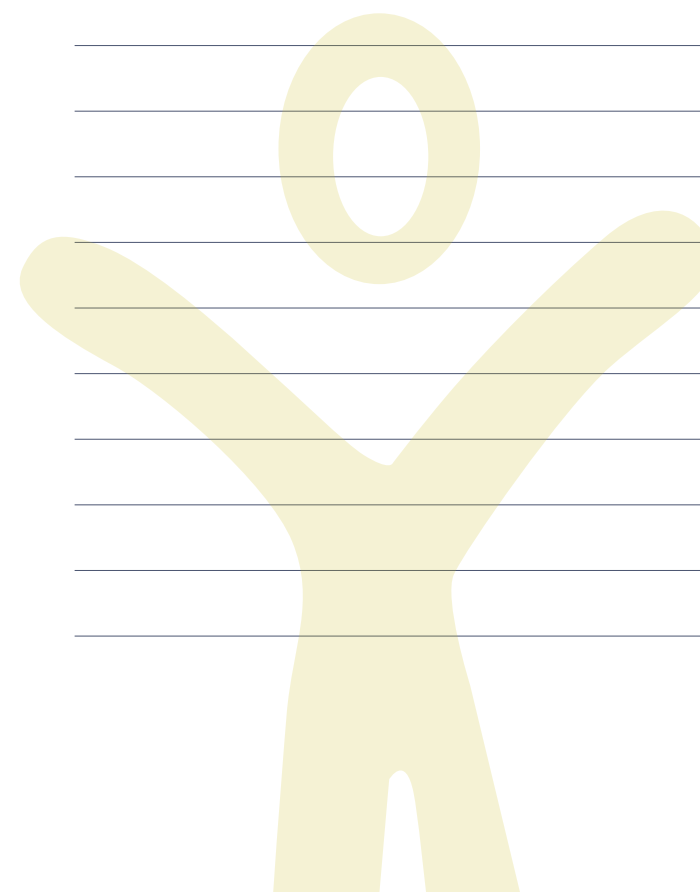
189 Royal Street, EAST PERTH WA 6004

P 9222 2555

E corporate.communications@dcp.wa.gov.au

**youthsayno.wa.gov.au**

# Notes







**Dr YES**

**Dr YES**



## Dr YES (Youth Education Sessions) is a school based health initiative of the AMA (WA).

The program sends specially trained volunteer medical students into metropolitan and rural high schools to have frank, open discussions on topics concerning youth such as Drugs, Alcohol, Sexual Health and Mental Health.

For more information visit **[dryes.com.au](http://dryes.com.au)**



Youth Services Directory compiled and produced by  
AMA (WA) Foundation, 2018  
14 Stirling Highway, Nedlands WA 6009  
P 08 9273 3000 F 08 9273 3073  
E [foundation@amawa.com.au](mailto:foundation@amawa.com.au) W [amawa.com.au](http://amawa.com.au)